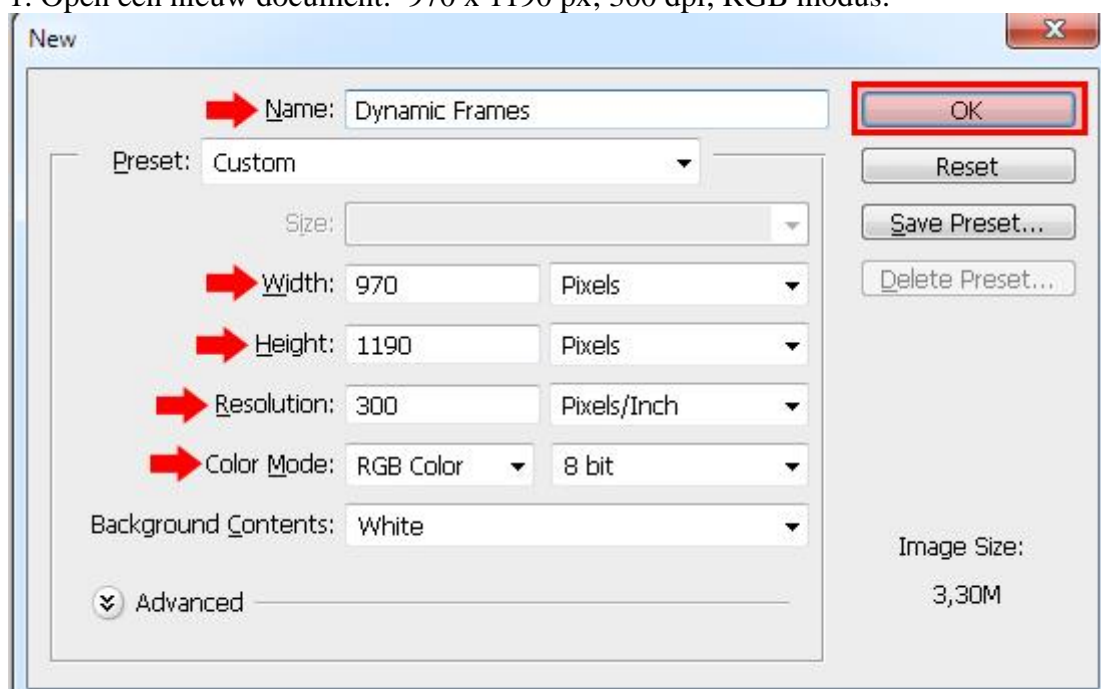


Frame maken – Slim Object



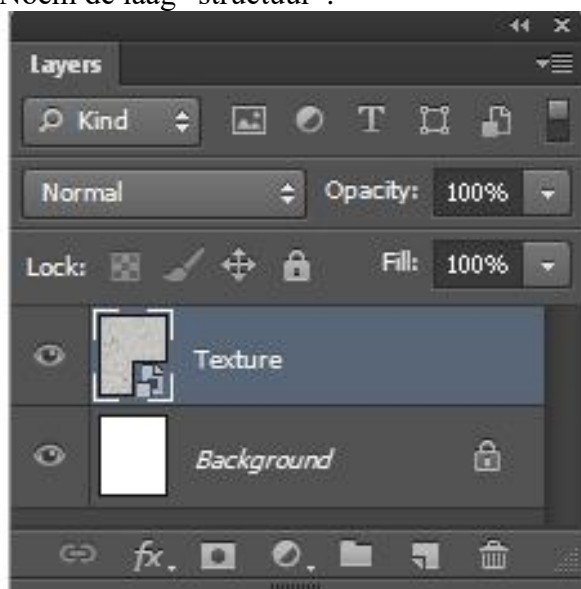
1. Open een nieuw document: 970 x 1190 px; 300 dpi; RGB modus.



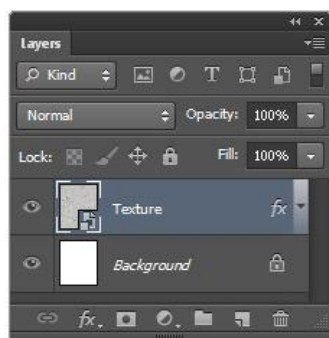
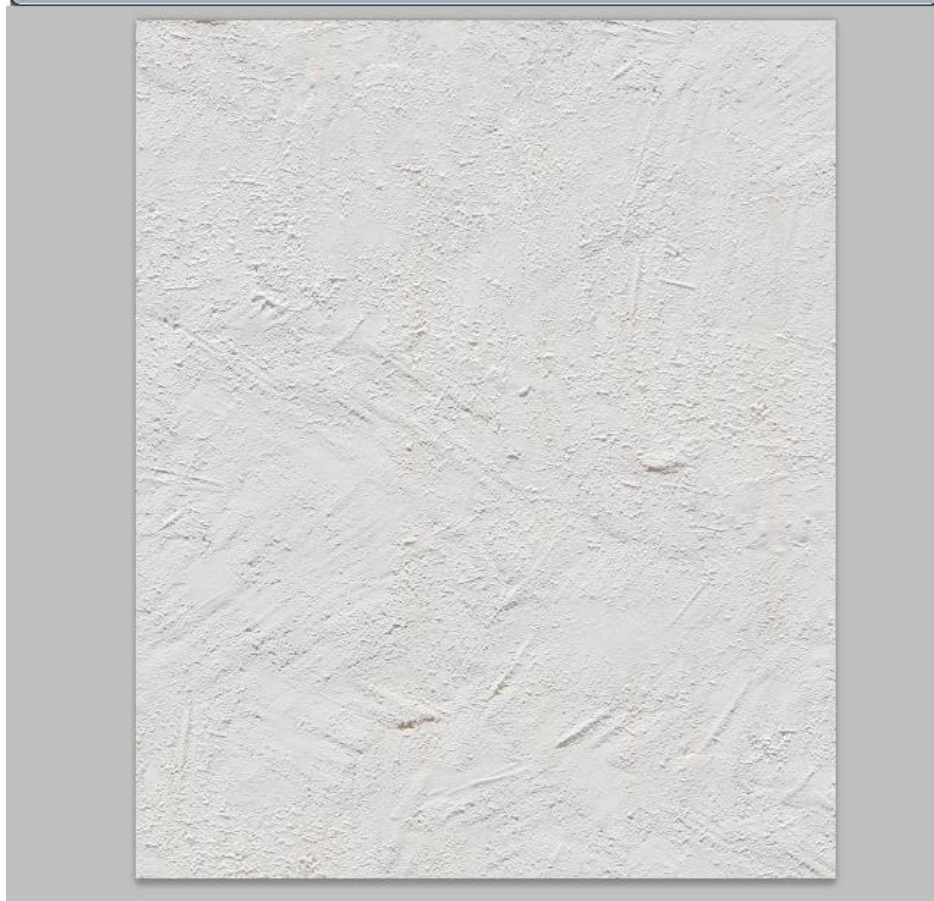
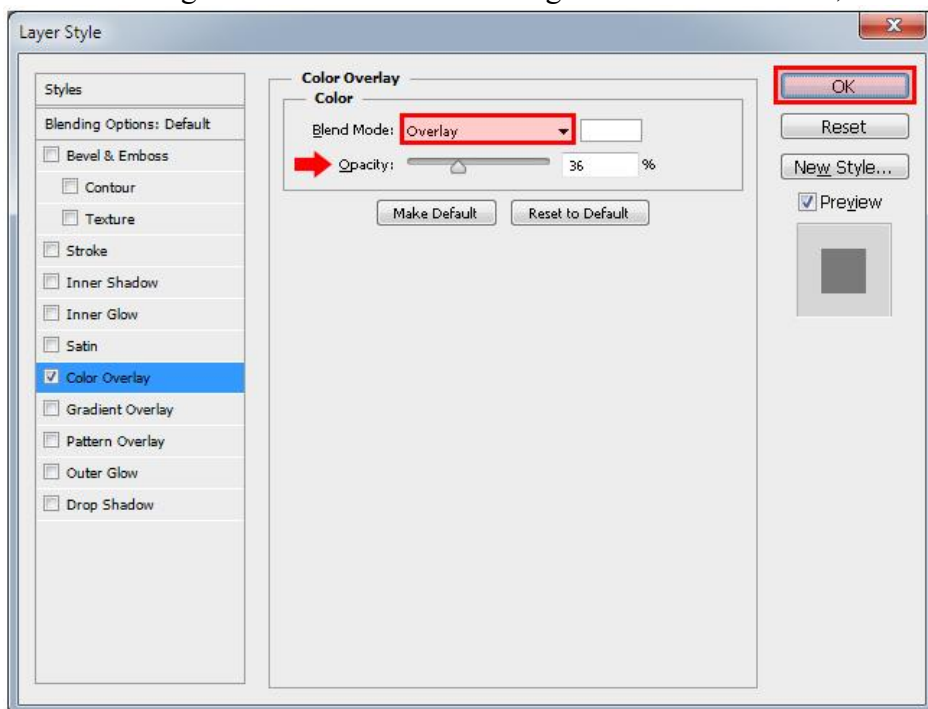
2. Plaatsen van de structuur laag ; grootte aanpassen aan dit canvas.



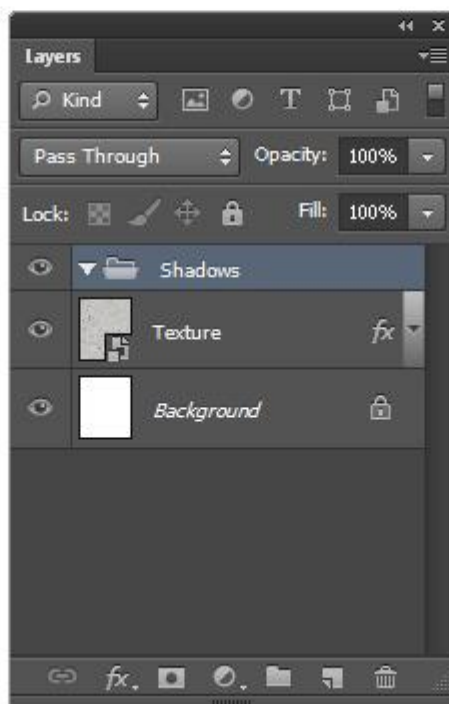
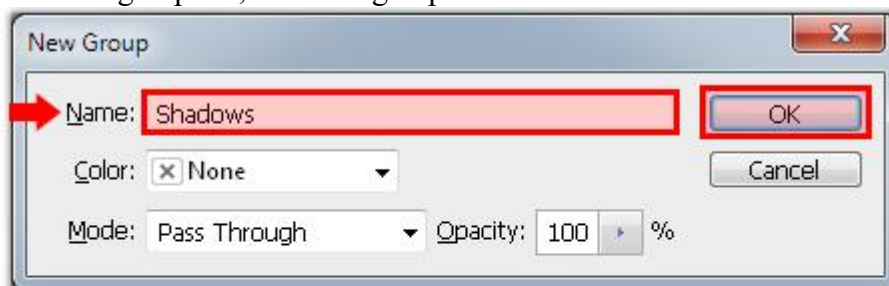
Noem de laag “structuur”.



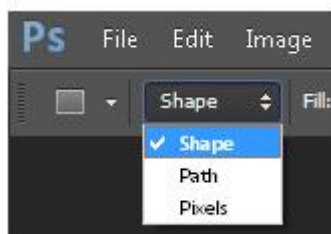
3. Geef de laag “structuur” Kleurbedekking : modus = Bedekken; kleur = #FFFFFF; dekking = 36%. OK.



4. Voeg een nieuwe groep toe; noem de groep “schaduwten”.

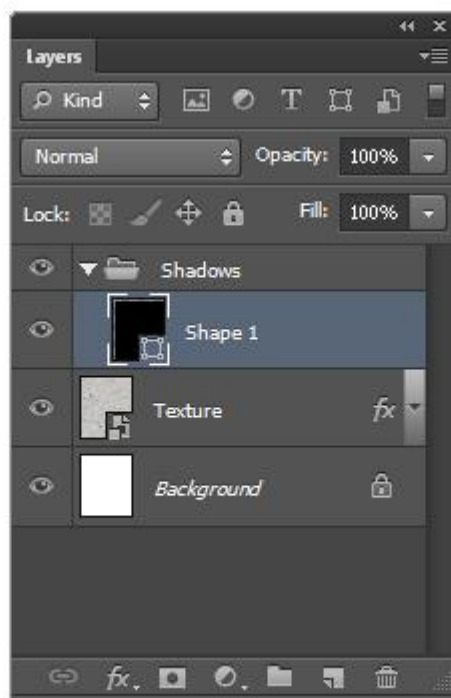
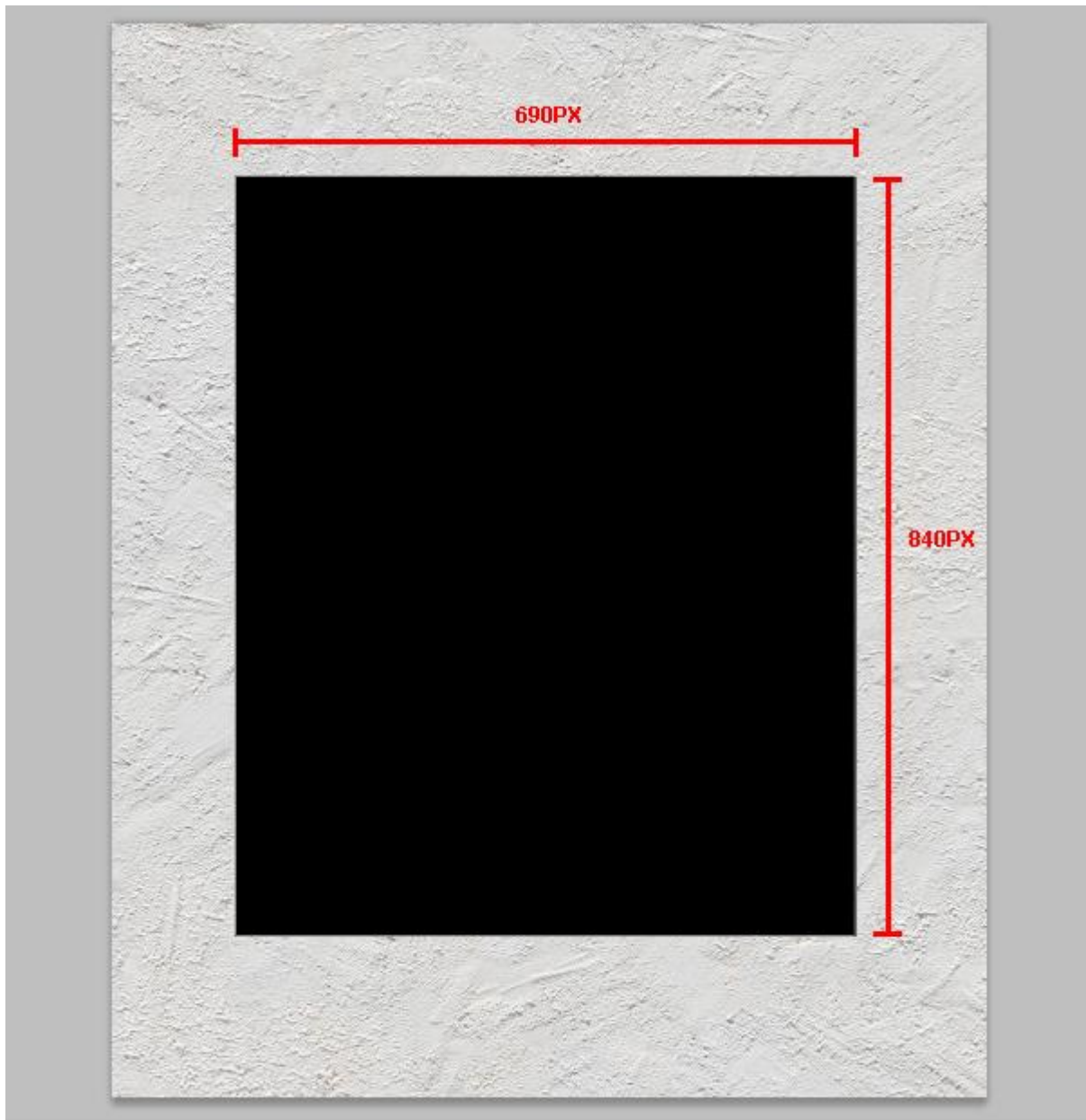


5. Toegevoegde vormen : vanaf hier de optie altijd op ‘Vorm’ (U) zetten in Optiebalk.

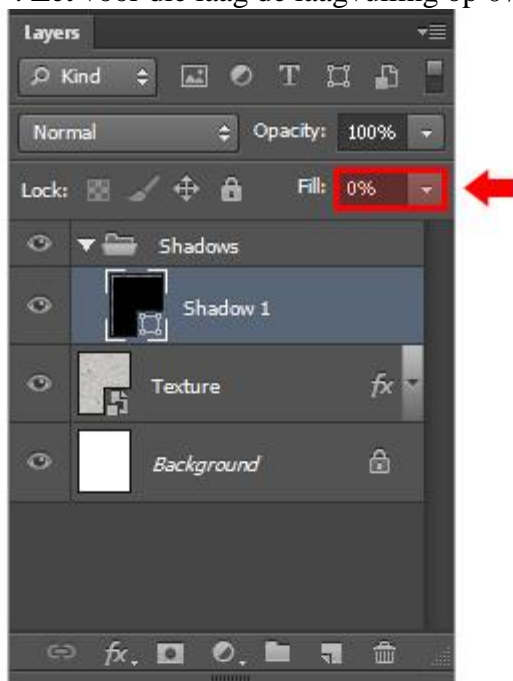


D toets aanklikken om standaardkleuren weer op zwart wit te zetten.

Teken een Rechthoek vorm midden het canvas; breedte = 690 px ; hoogte = 840px.

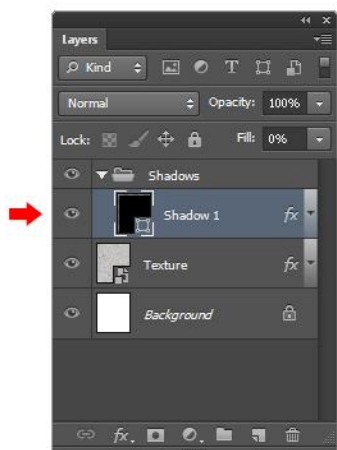
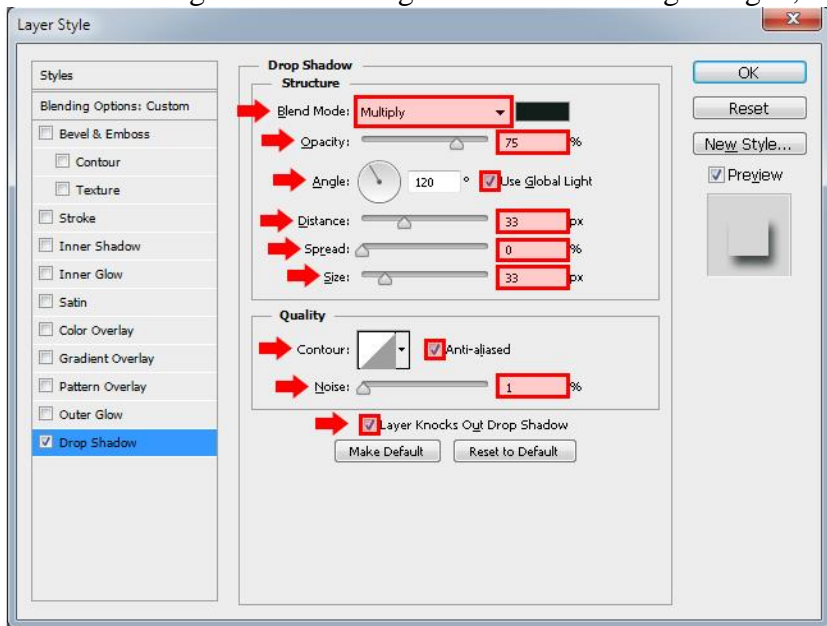


Noem deze laag "Schaduw 1". Zet voor die laag de laagvulling op 0%.

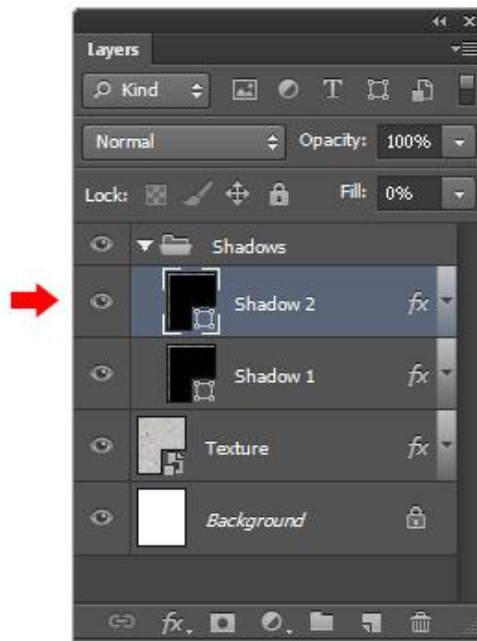
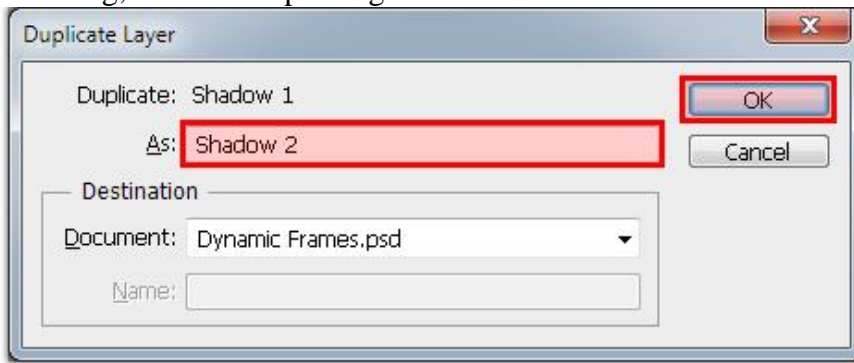


6. Geef de laag “schaduw1” Slagschaduw ; zwarte kleur.

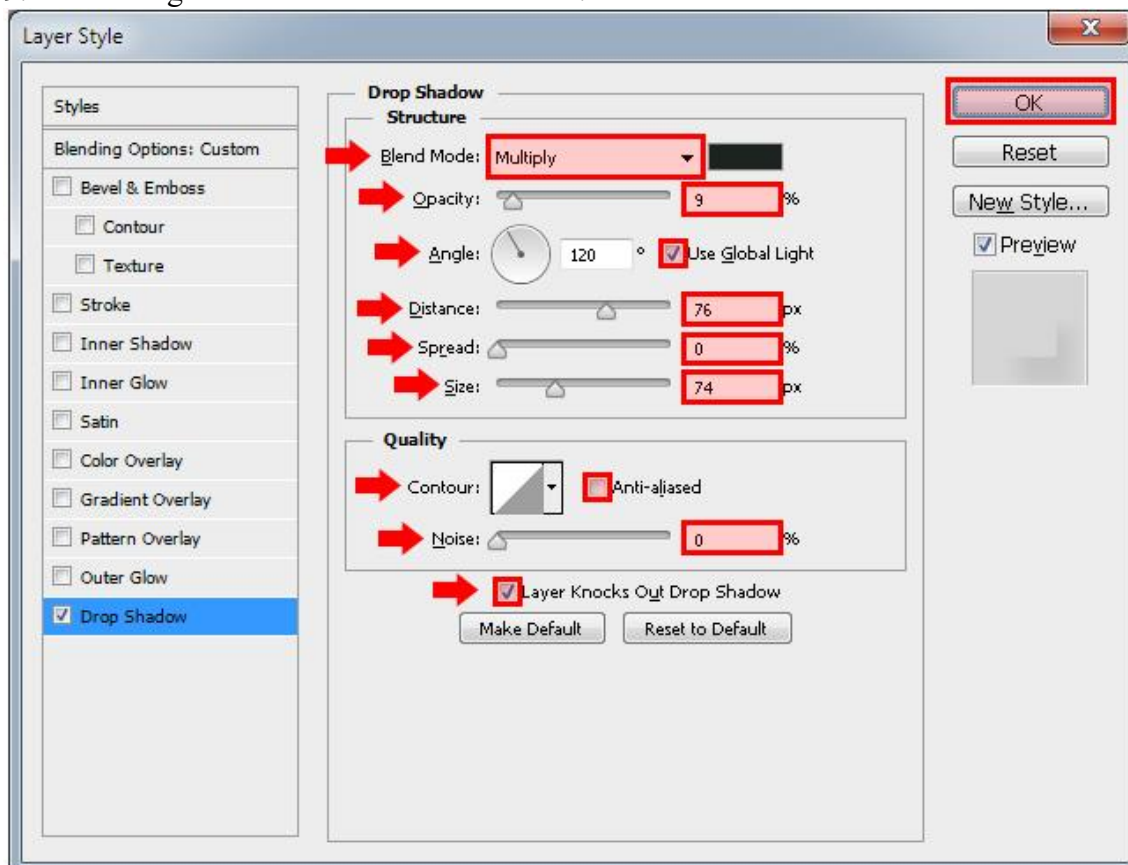
7. Zie instellingen voor die Slagschaduw : Vermenigvuldigen; 75% ; 120° ; 33 px; 0% ; 33 px; Ruis = 1%

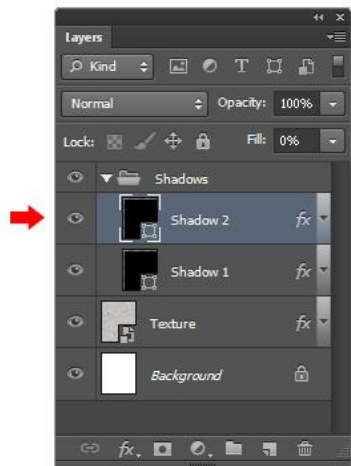
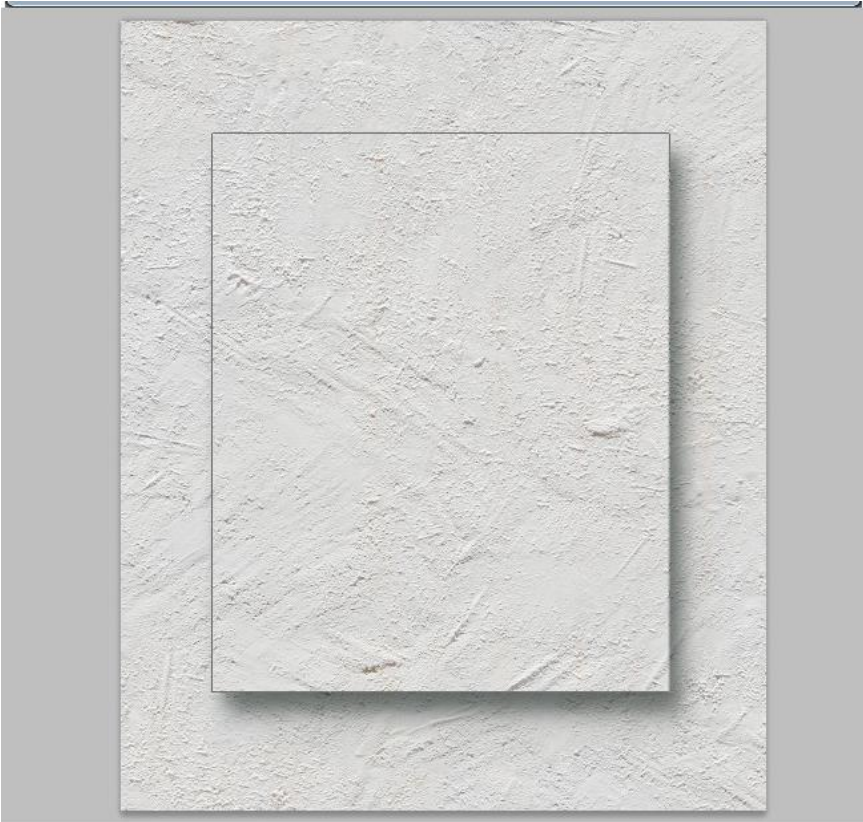


8. Dupliceer de laag; noem de kopie laag "Schaduw 2". OK.

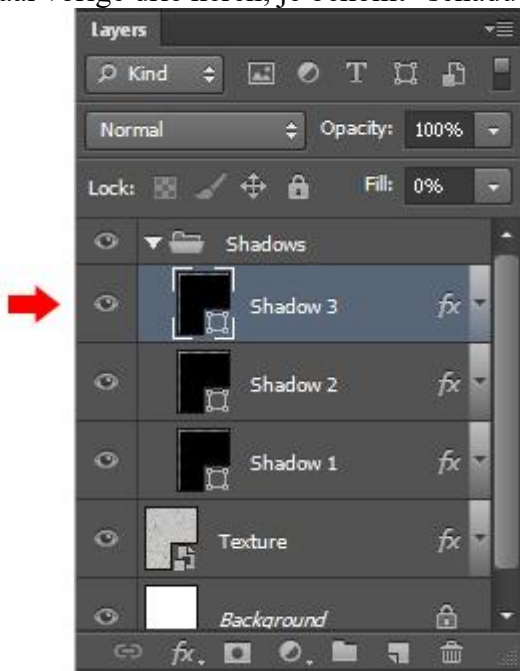


9. Pas de Slagschaduw aan voor "schaduw2".

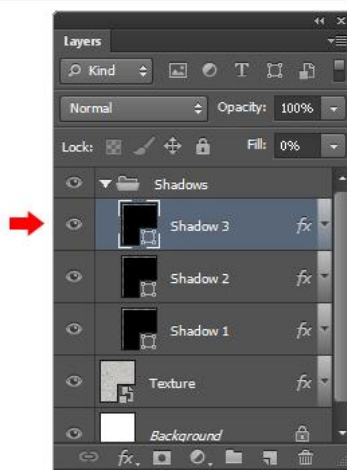
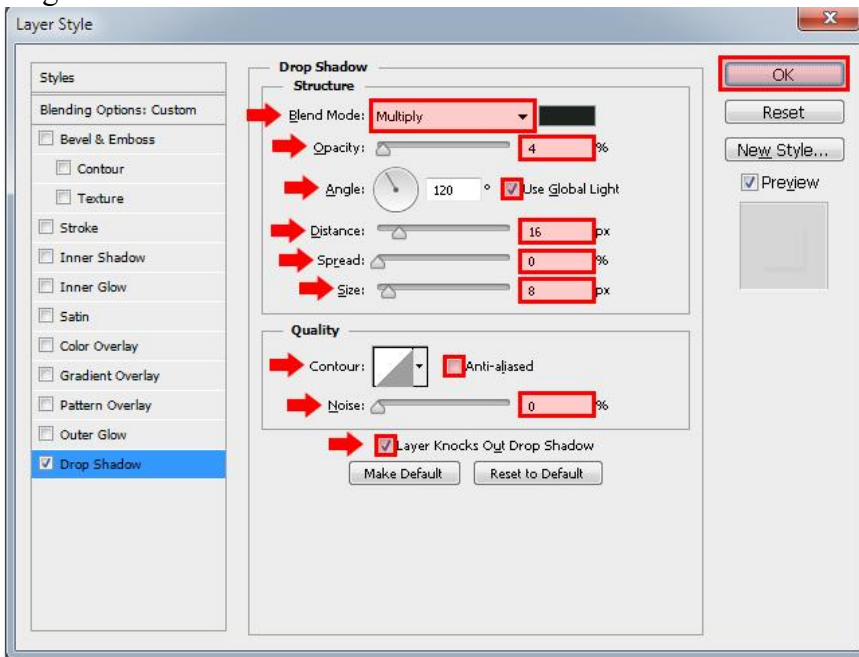




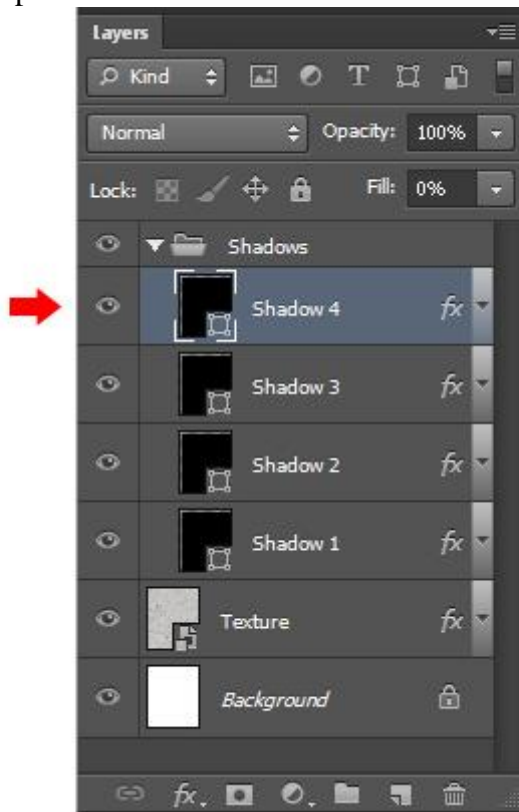
10. Herhaal vorige drie keren; je krijgt "schaduw3".



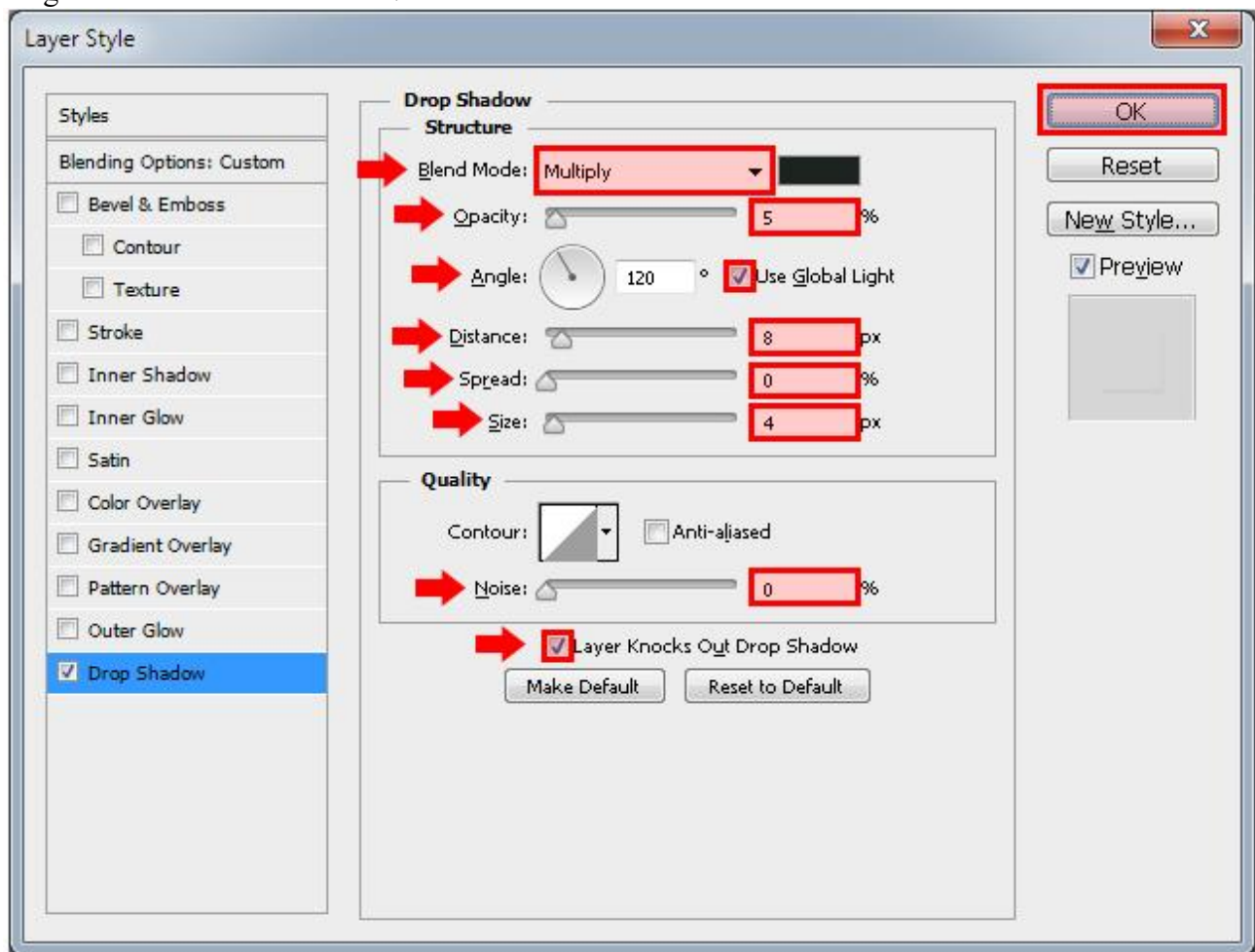
Slagschaduw voor "schaduw3".

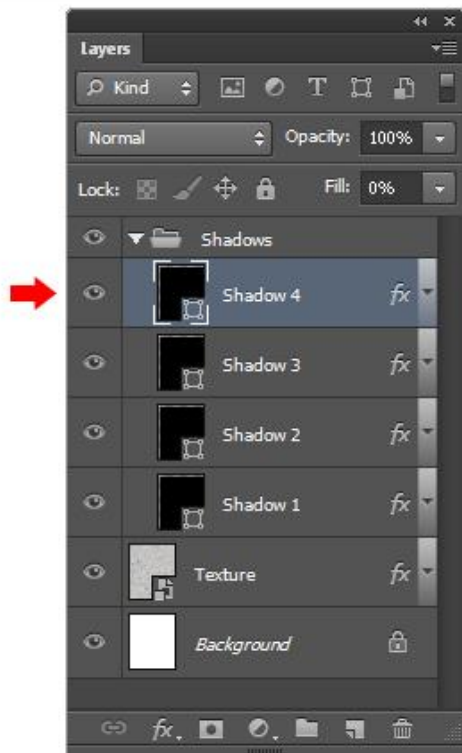


11. Laag dupliceren → "Schaduw 4".

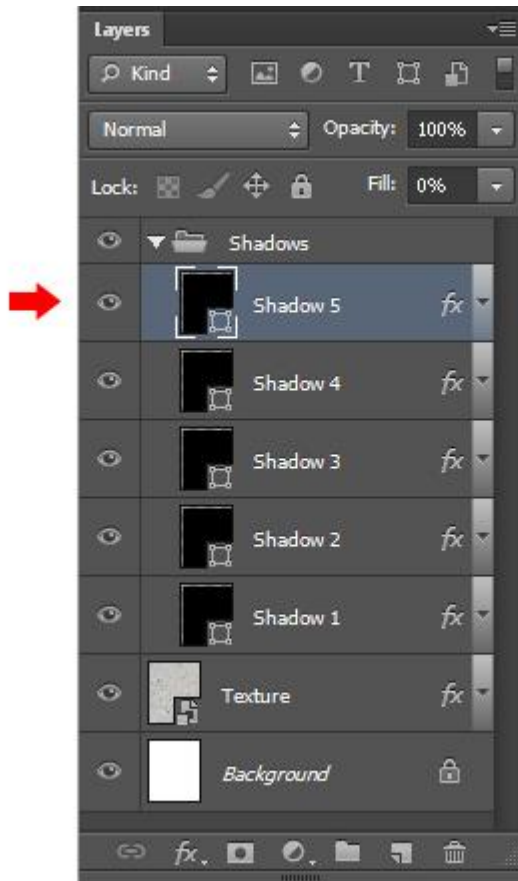


Slagschaduw voor "schaduw4".

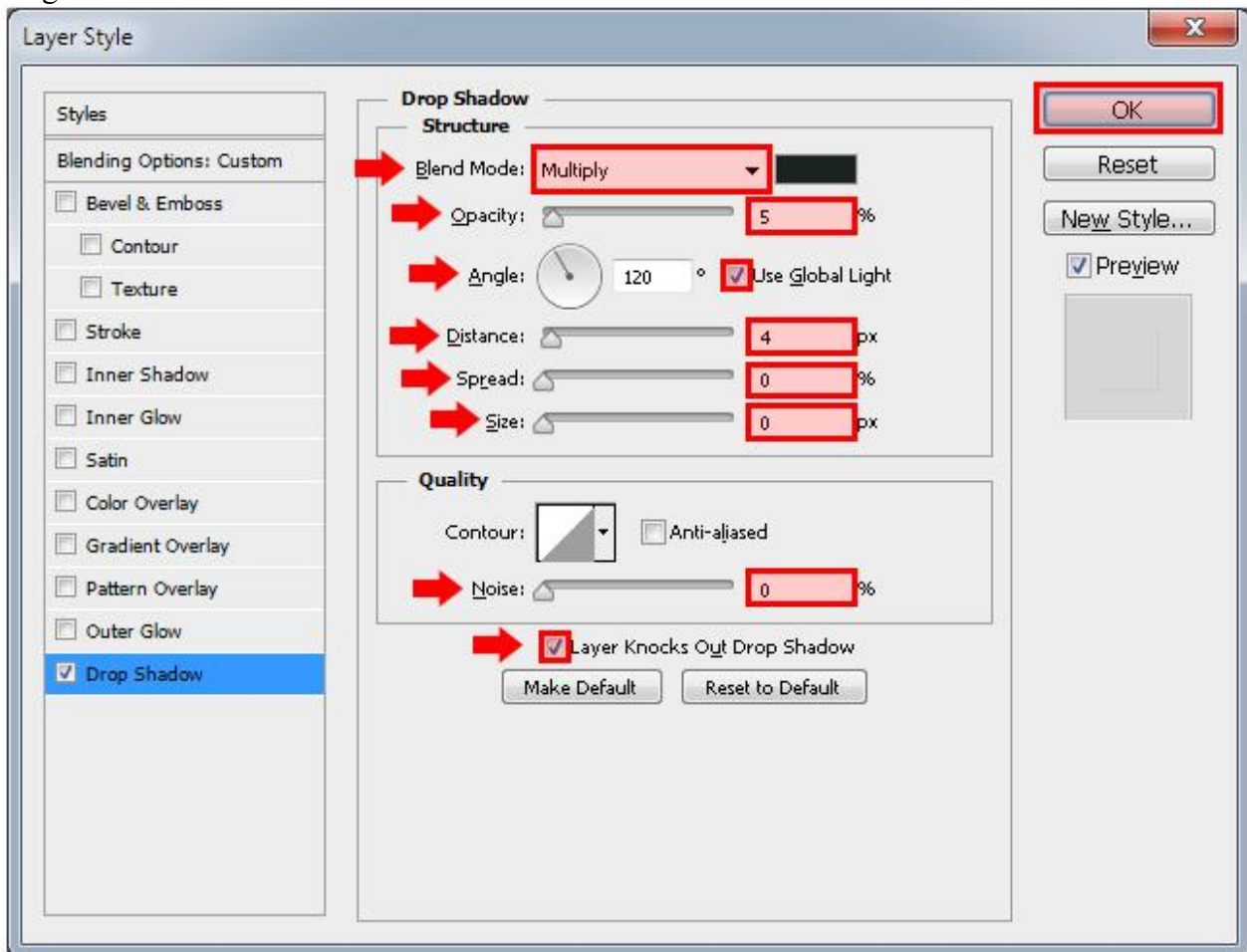


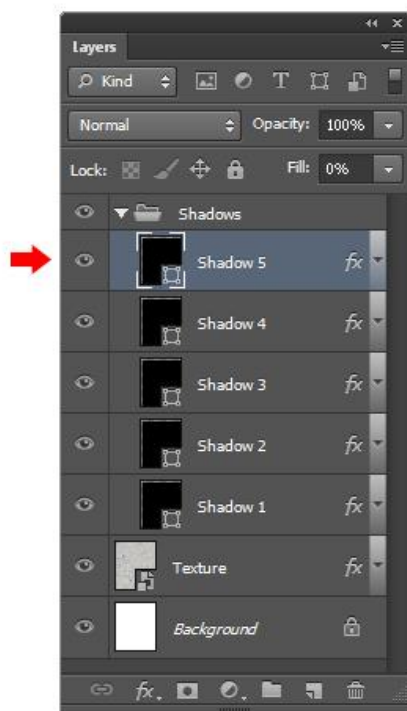


12. Laatste keer dupliceren → "Schaduw 5".

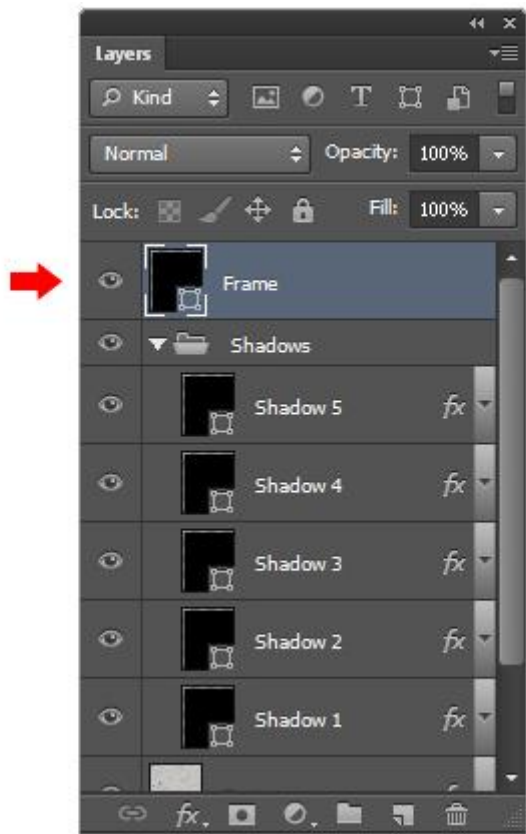
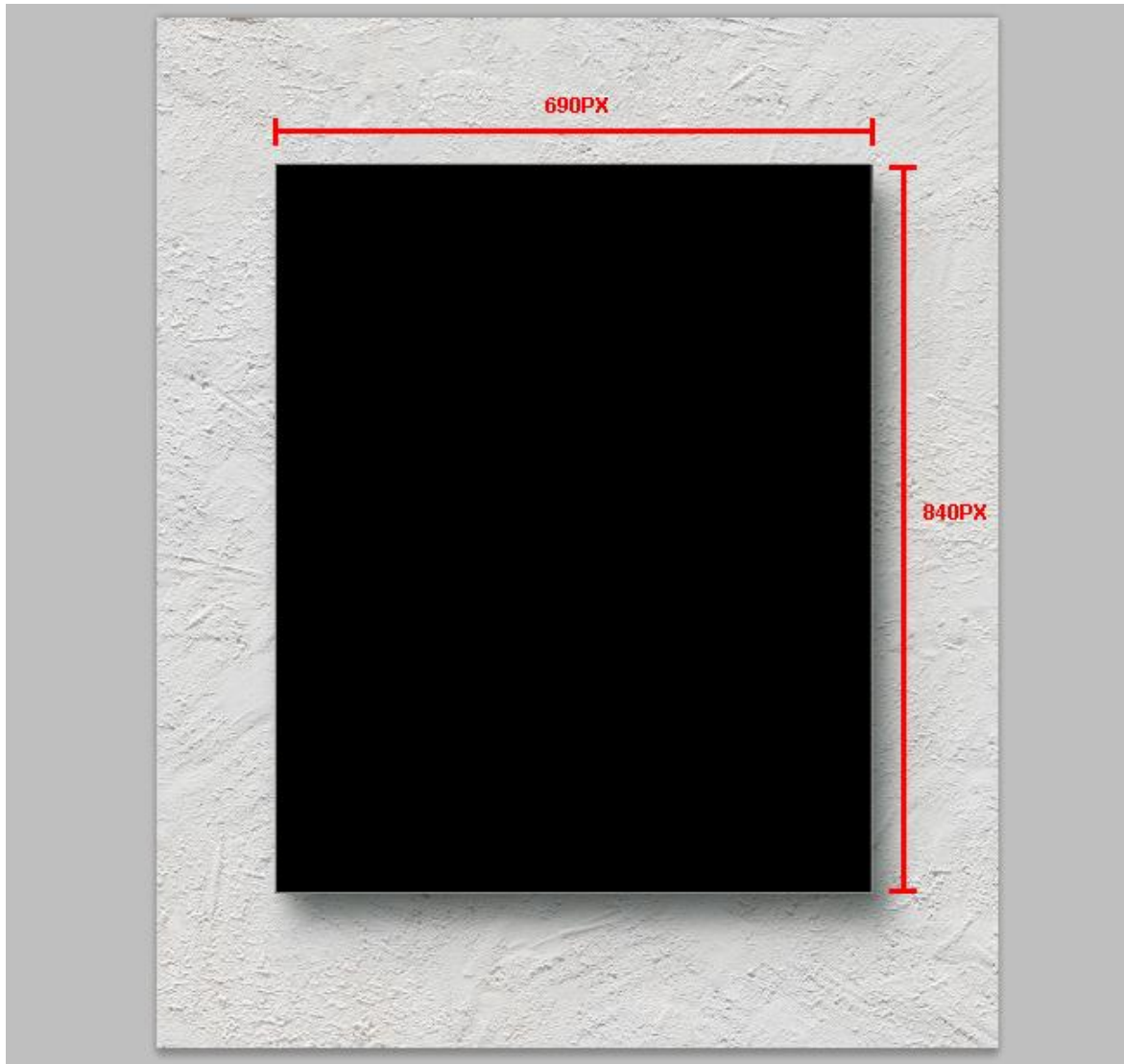


Slagschaduw voor “schaduw 5”.

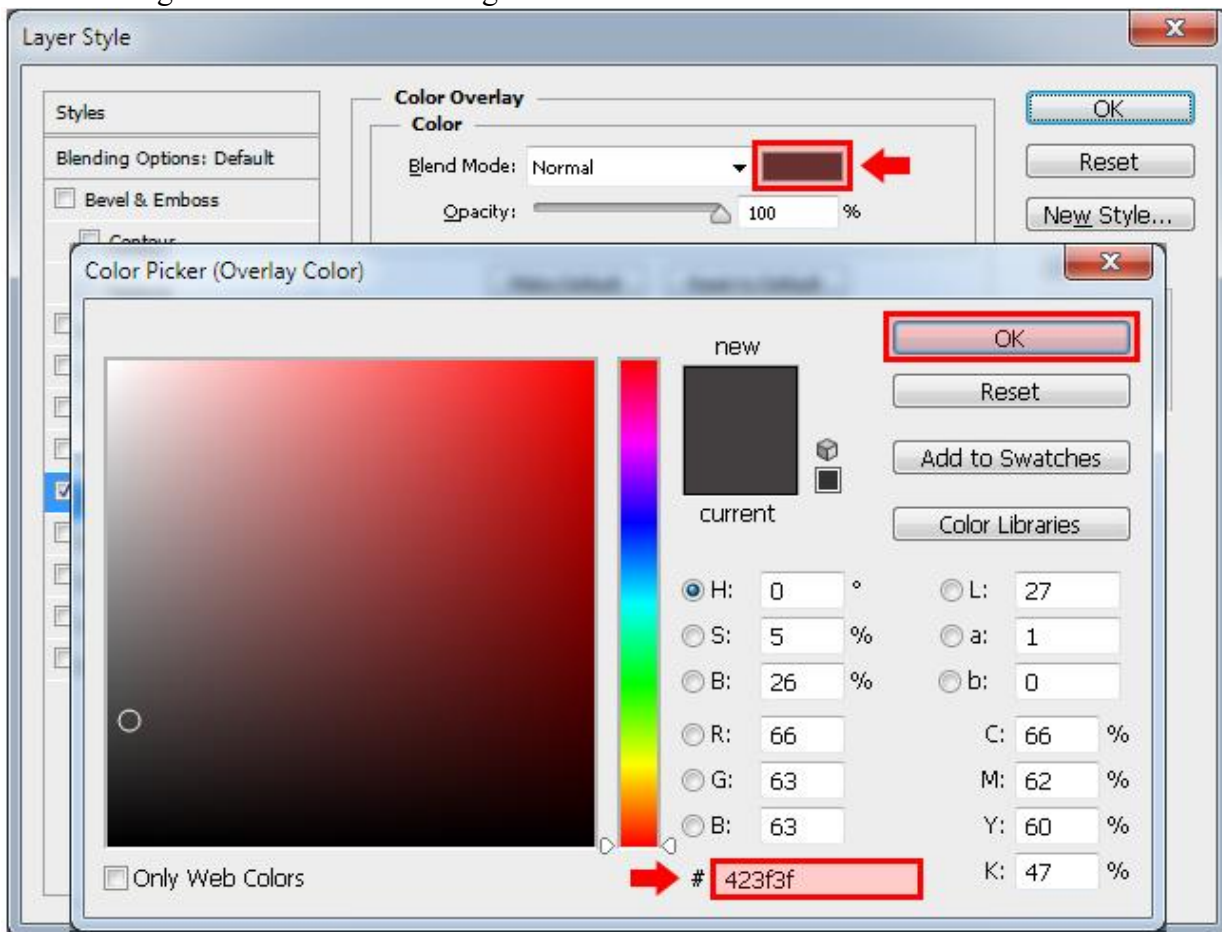




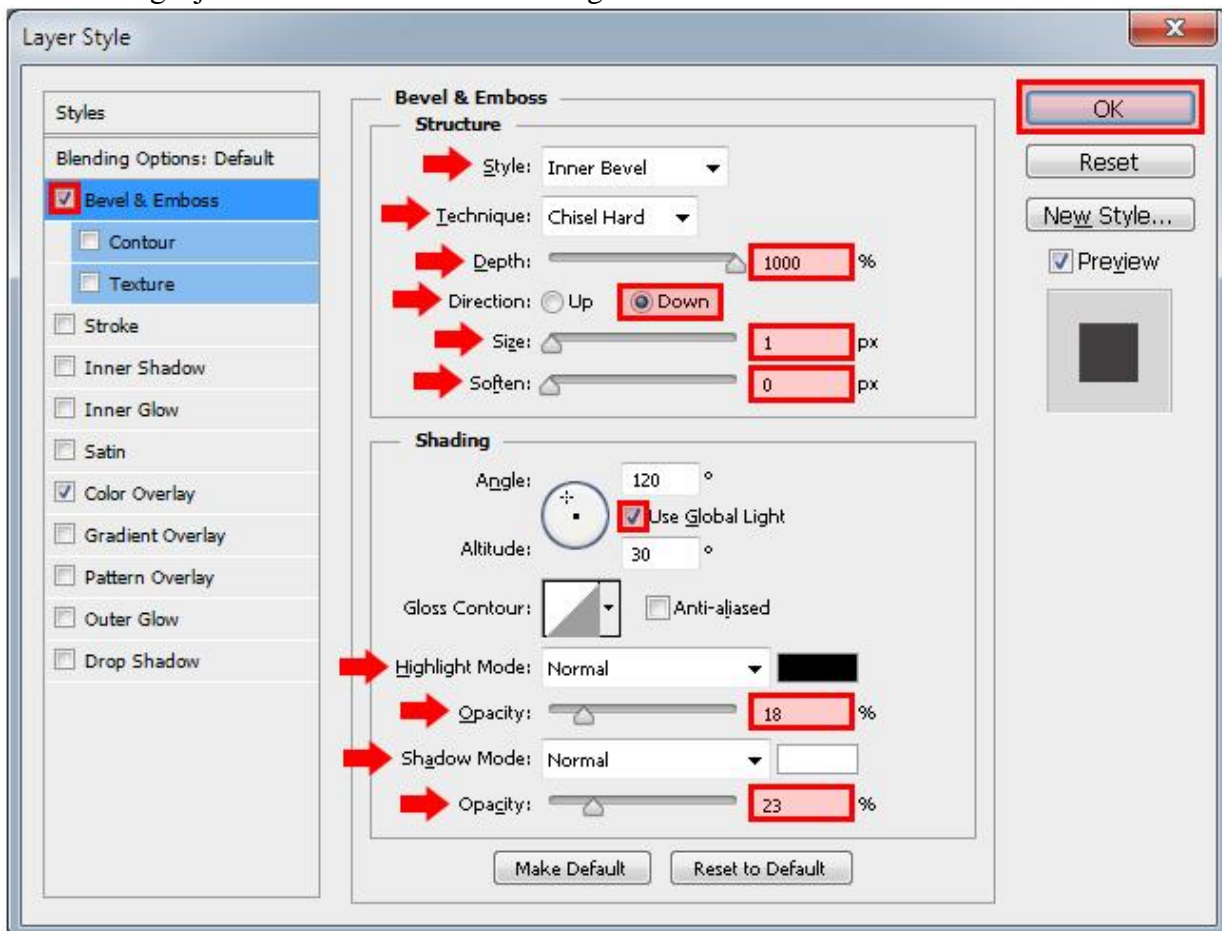
13. Teken opnieuw een rechthoekvorm boven de groep en midden het document; noem de laag “frame” :
Breedte = 690 px ; hoogte = 840px.

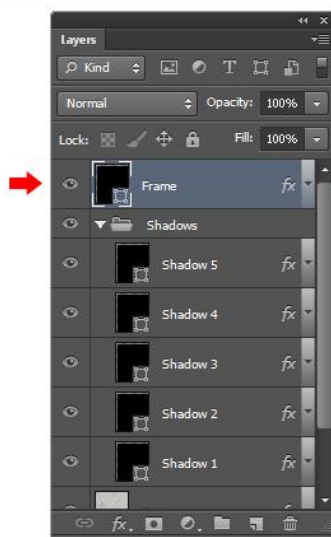
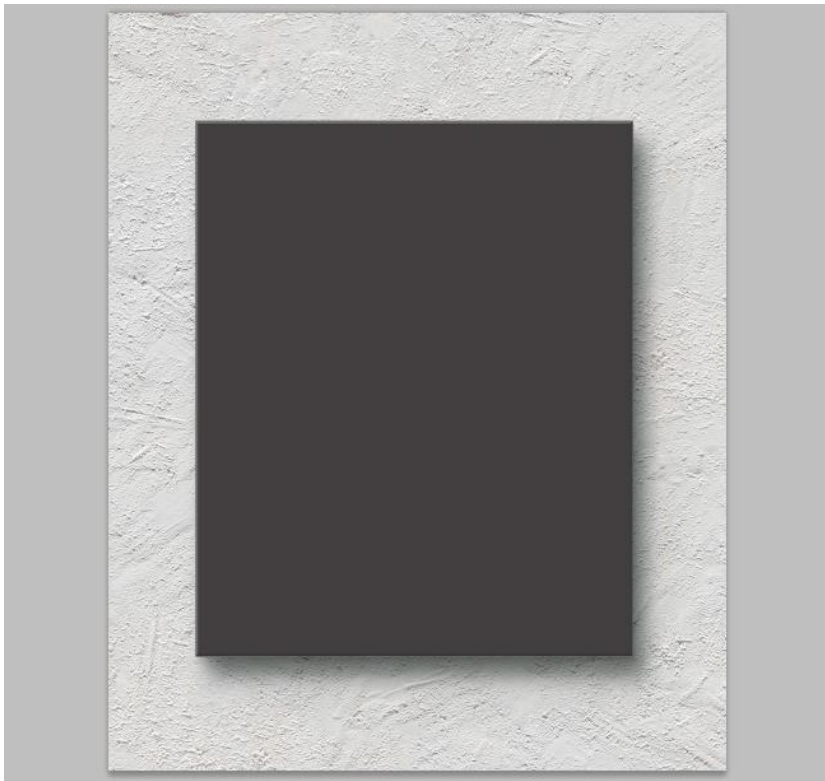


14. Geef laag “frame” Kleurbedekking met kleur = # 423F3F.

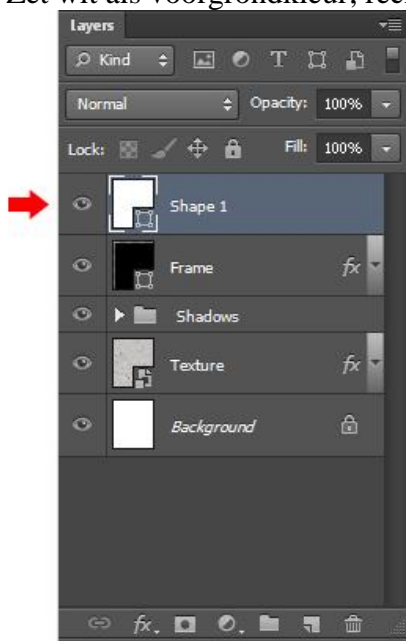


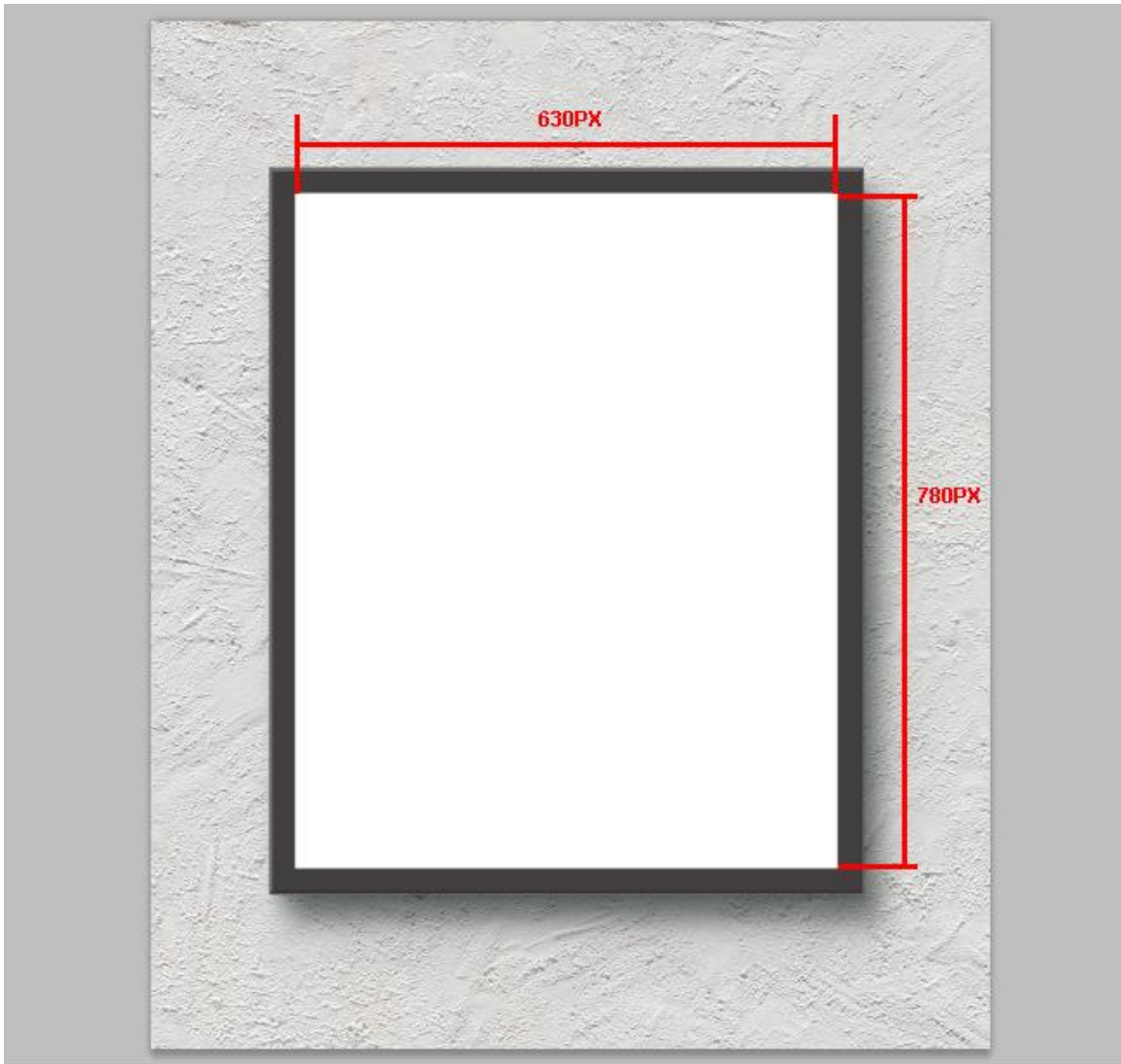
Daarna Laagstijl ‘Schuine kant en Reliëf’. Gegraveerd hard



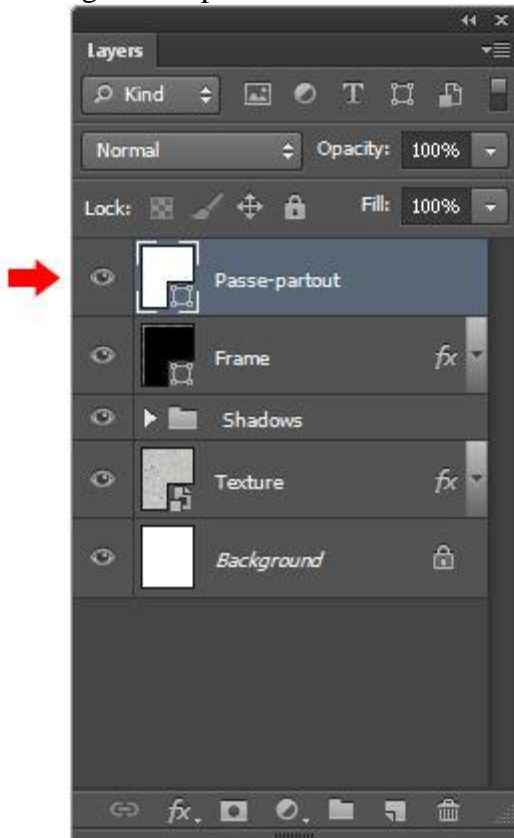


15. Zet wit als voorgrondkleur; rechthoekvorm tekenen : breedte =630px ; hoogte = 780px.

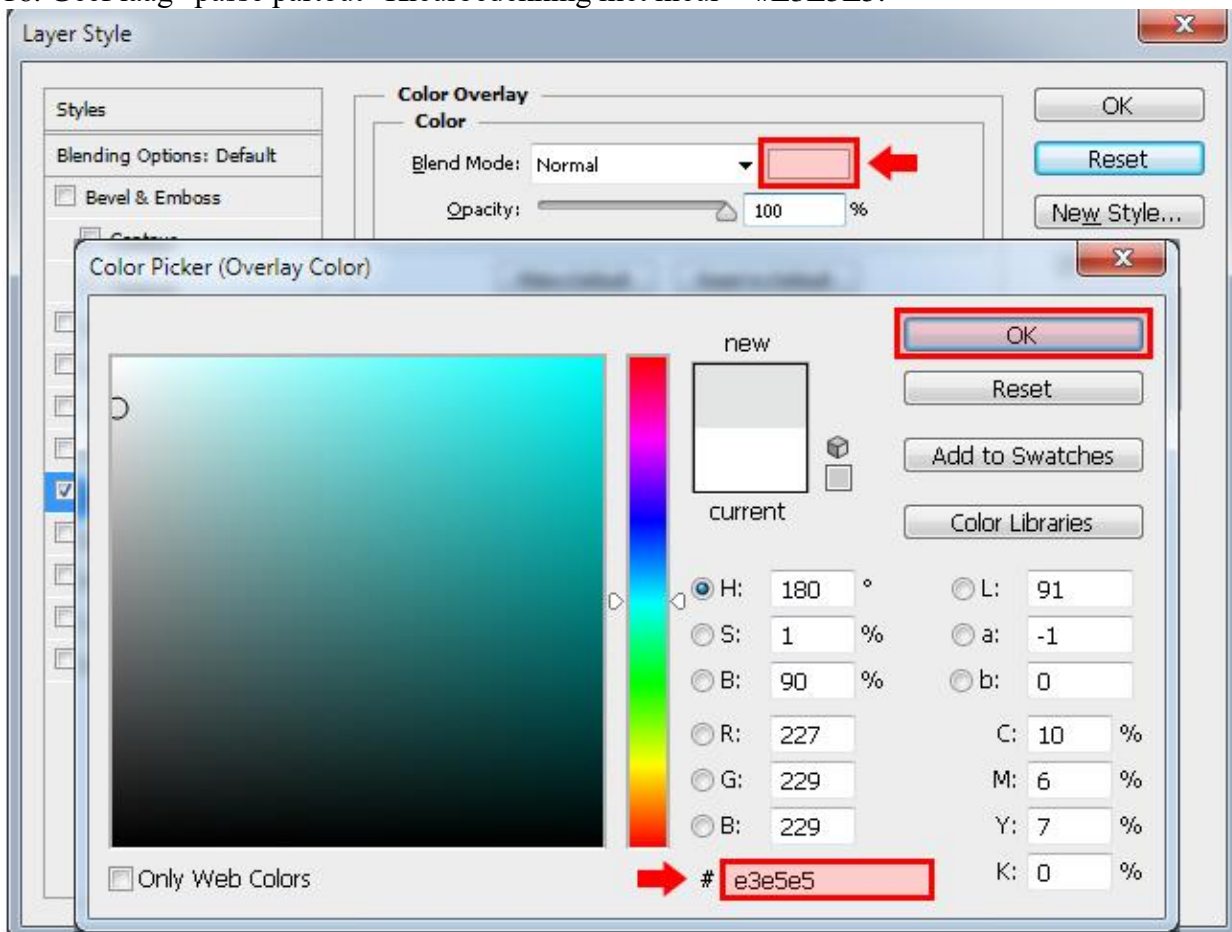




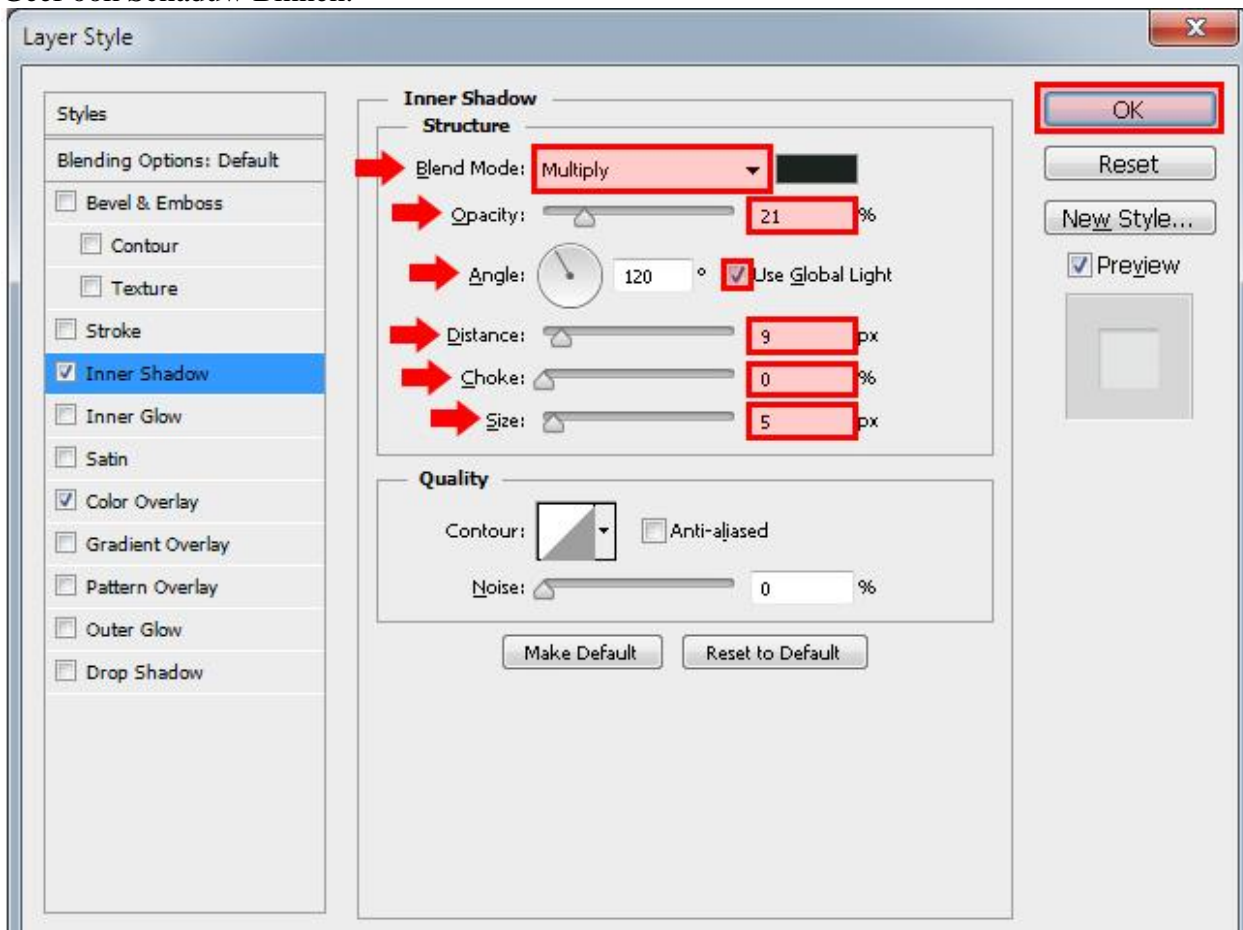
Noem de laag "Passe-partout".

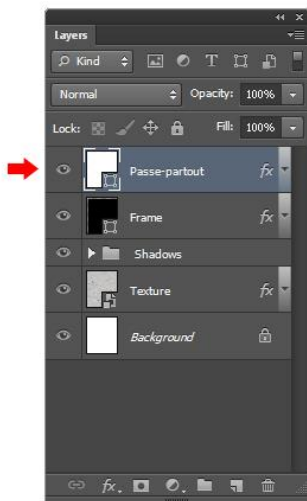
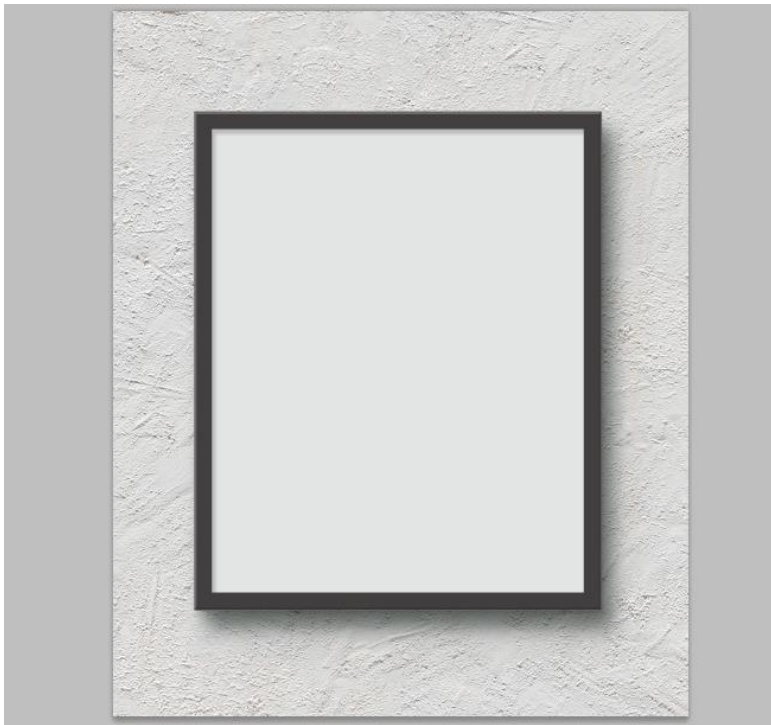


16. Geef laag “passe partout” Kleurbedekking met kleur = #E3E5E5.

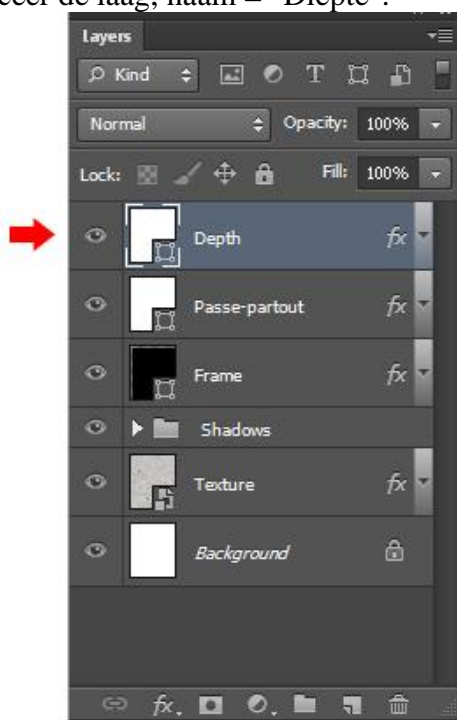


Geef ook Schaduw Binnen.

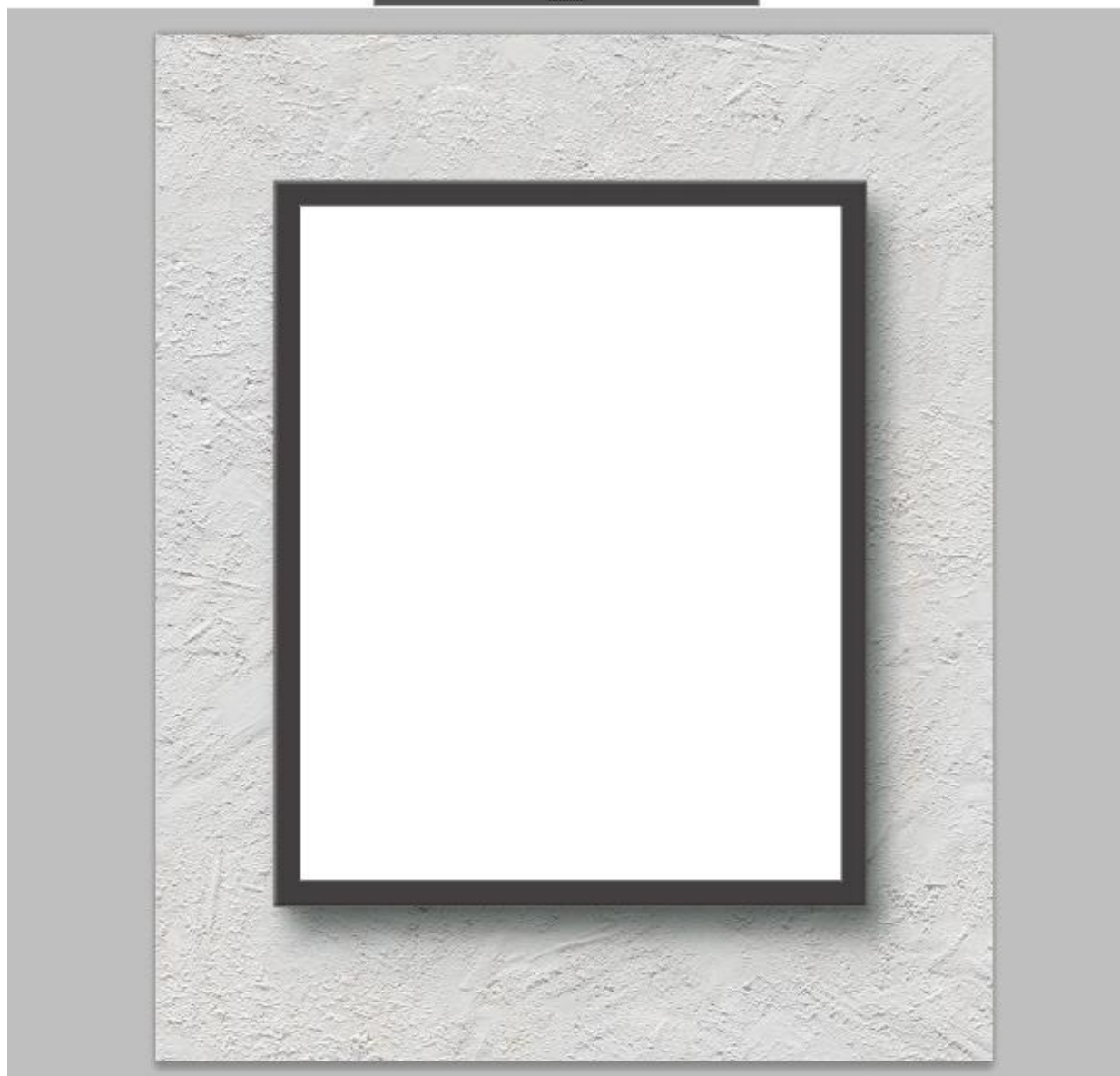
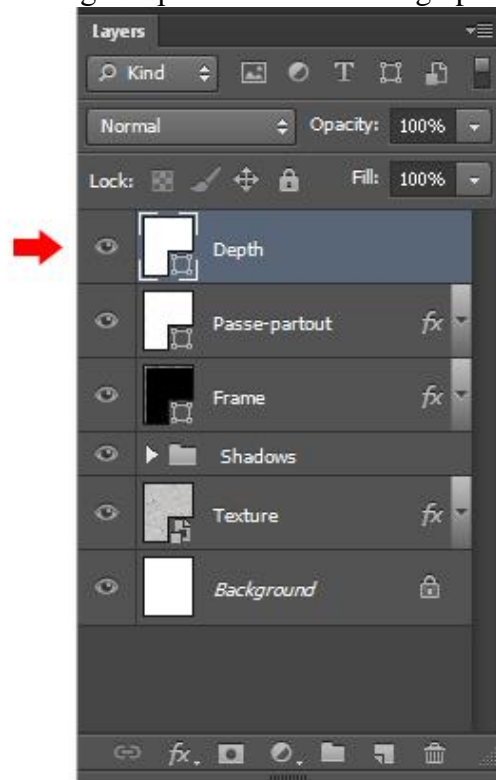




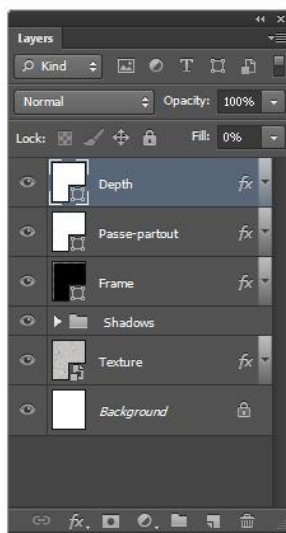
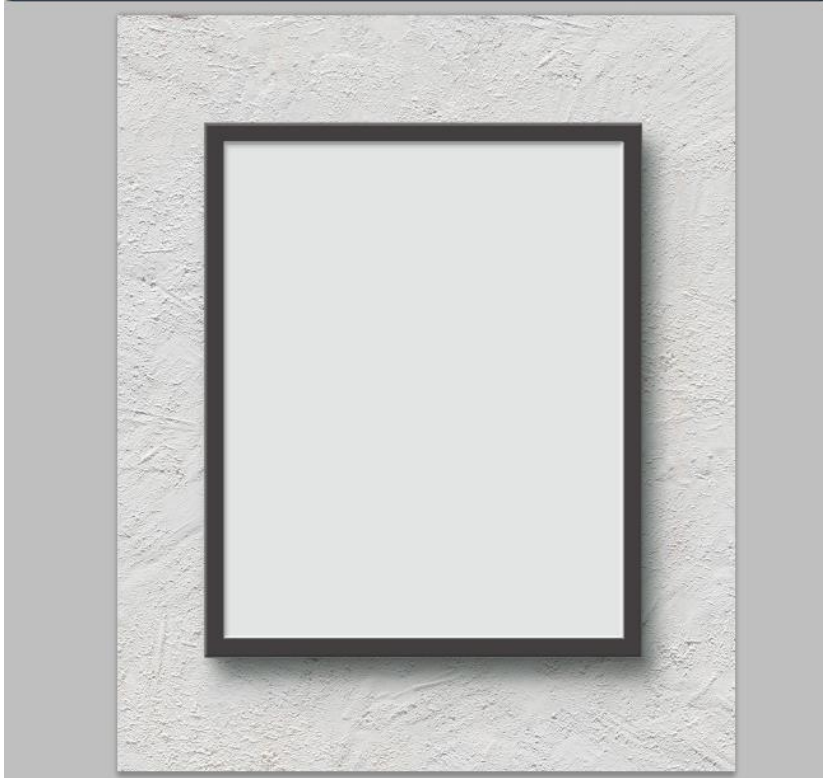
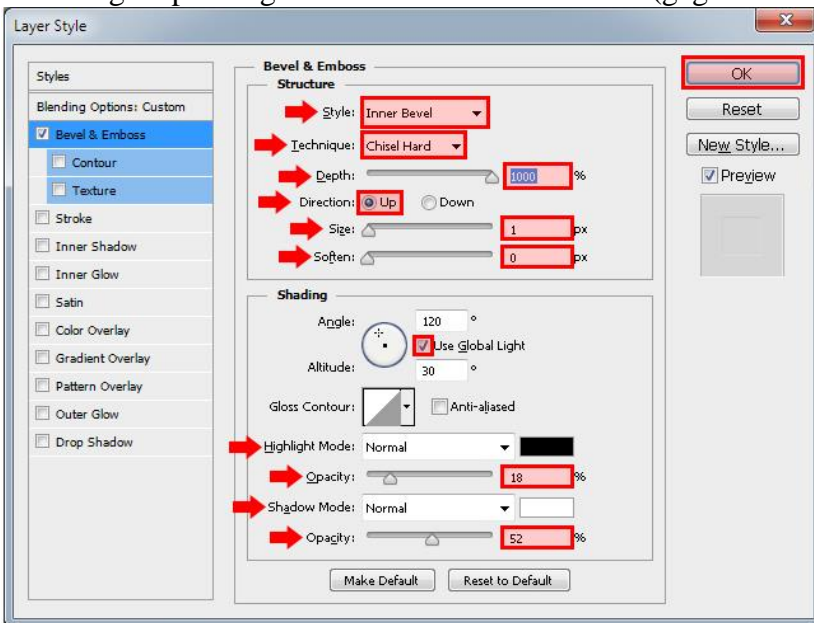
17. Dupliceer de laag; naam = "Diepte".



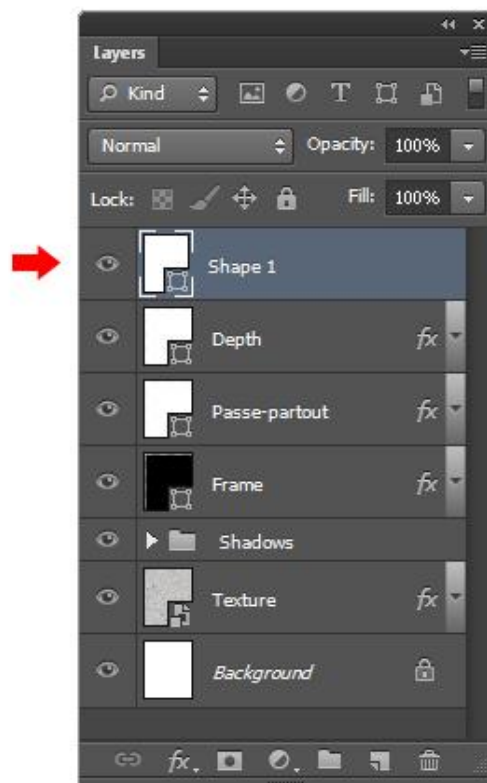
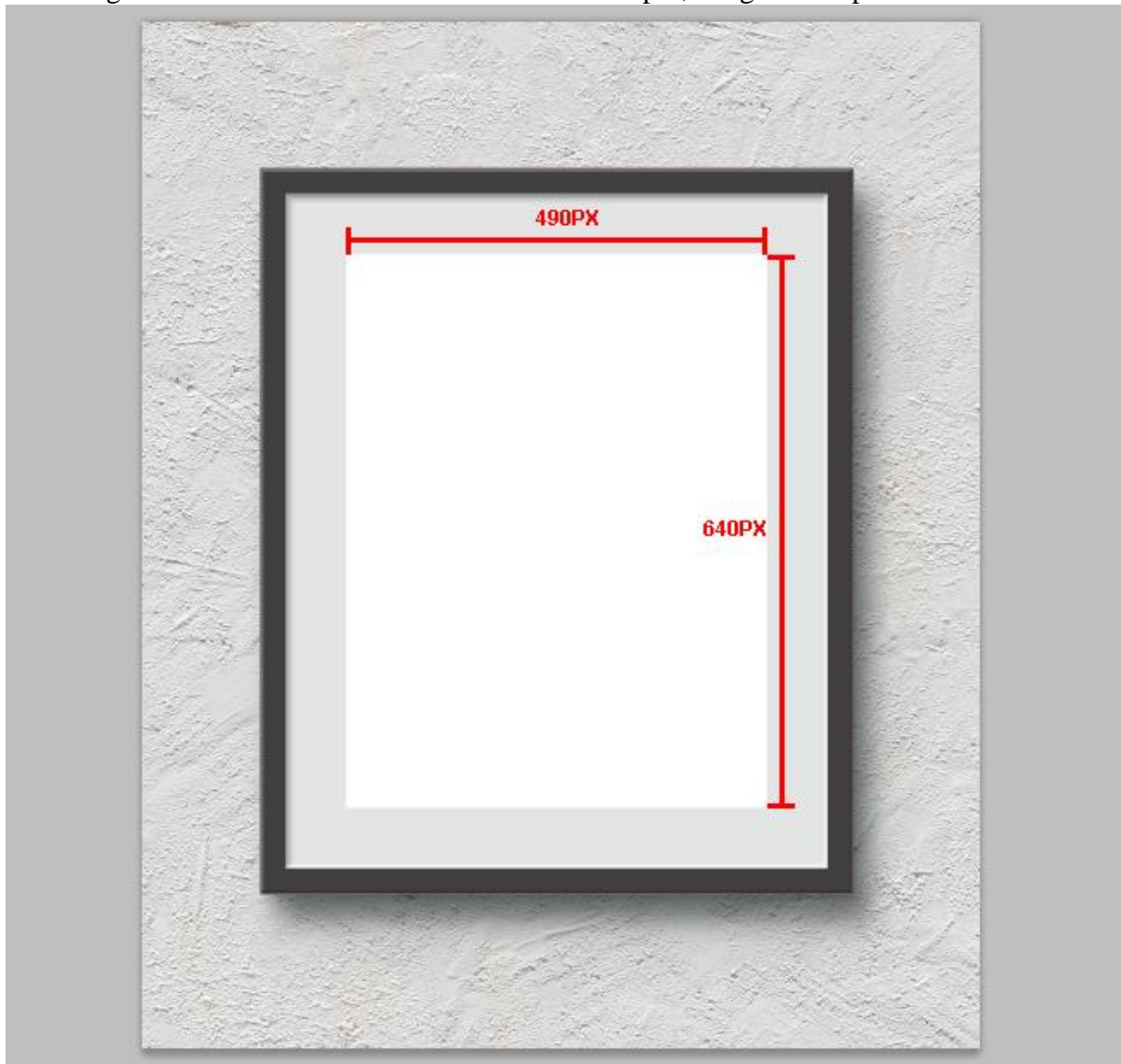
Verwijder de laagstijlen van laag “diepte” en zet de vulling op 0%



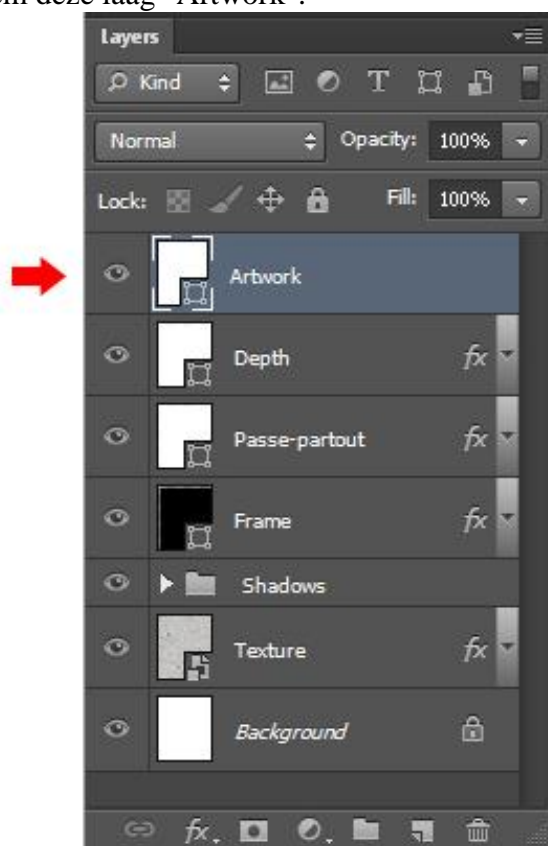
Geef laag diepte volgende Schuine kant en Reliëf. (gegraveerd hard ; 1000%; Omhoog; 1px)



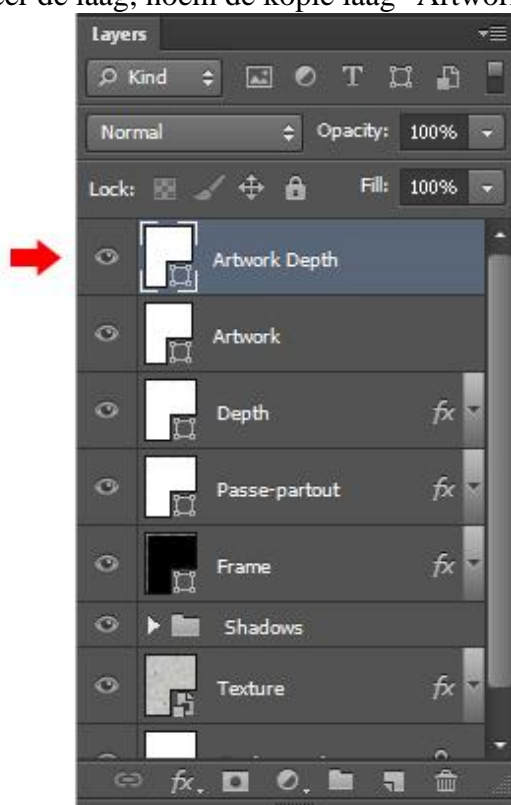
18. Terug een rechthoekvorm tekenen : breedte = 490px ; hoogte = 640px.



Noem deze laag "Artwork".

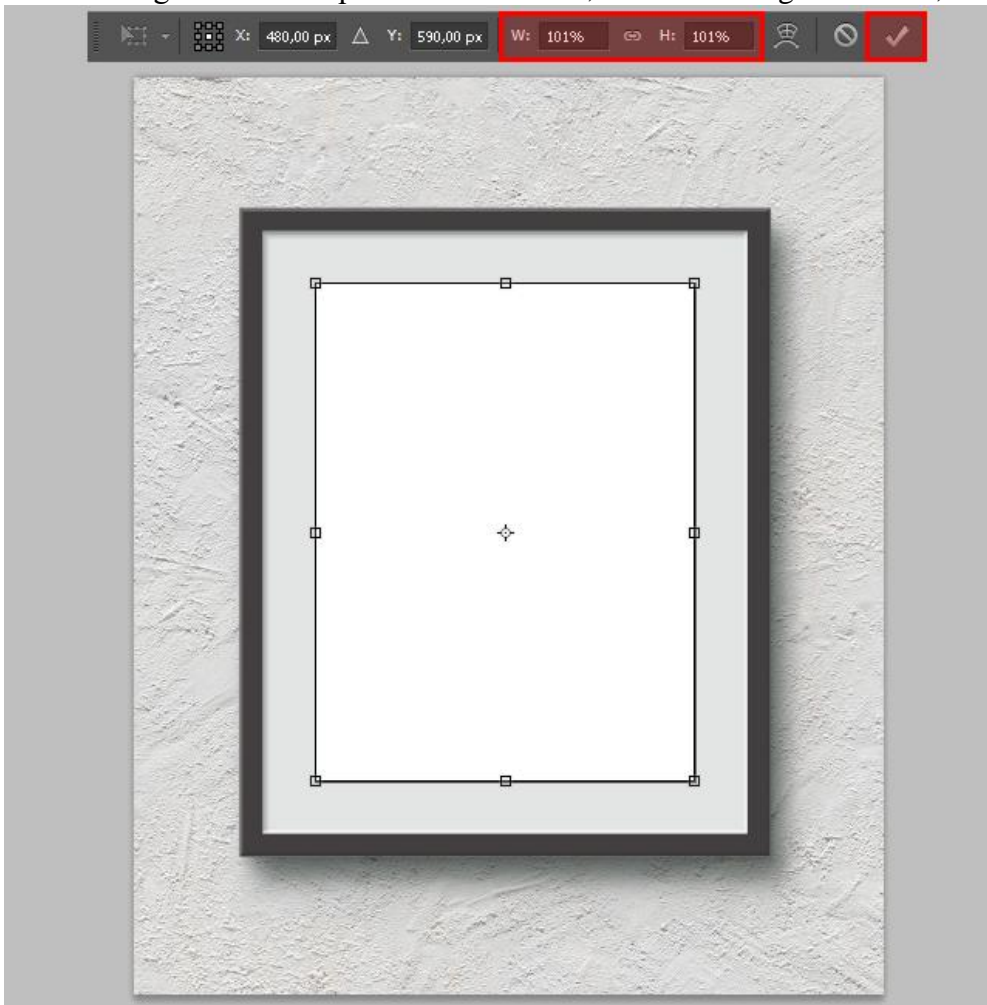


19. Dupliceer de laag; noem de kopie laag "Artwork Diepte".

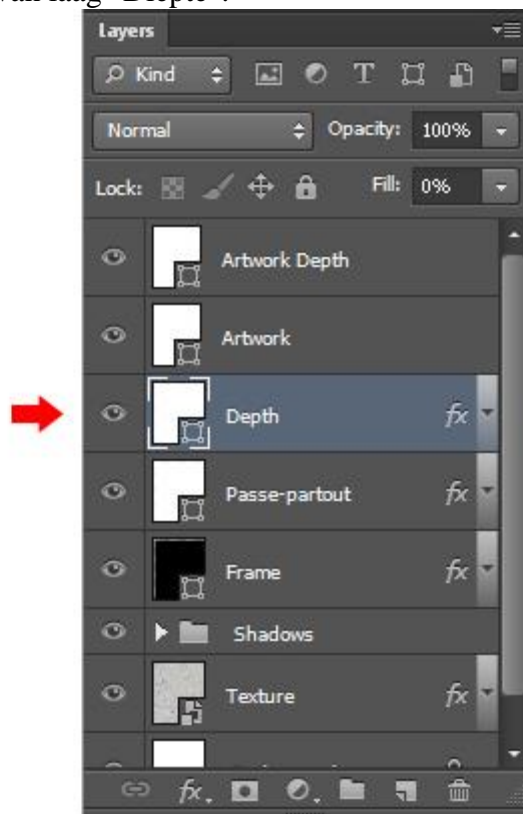




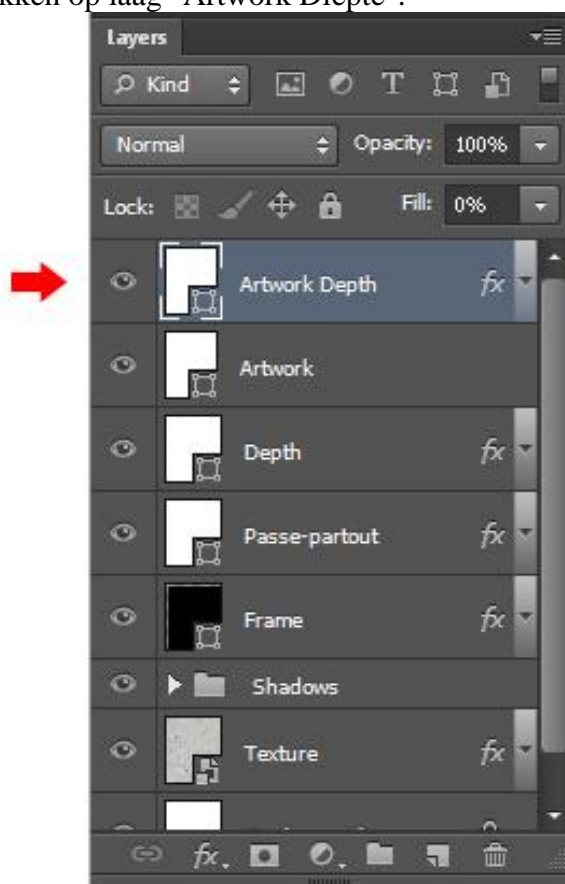
Voor de laag “artwork diepte” : klik Ctrl + T , breedte = hoogte = 101% ; enteren.

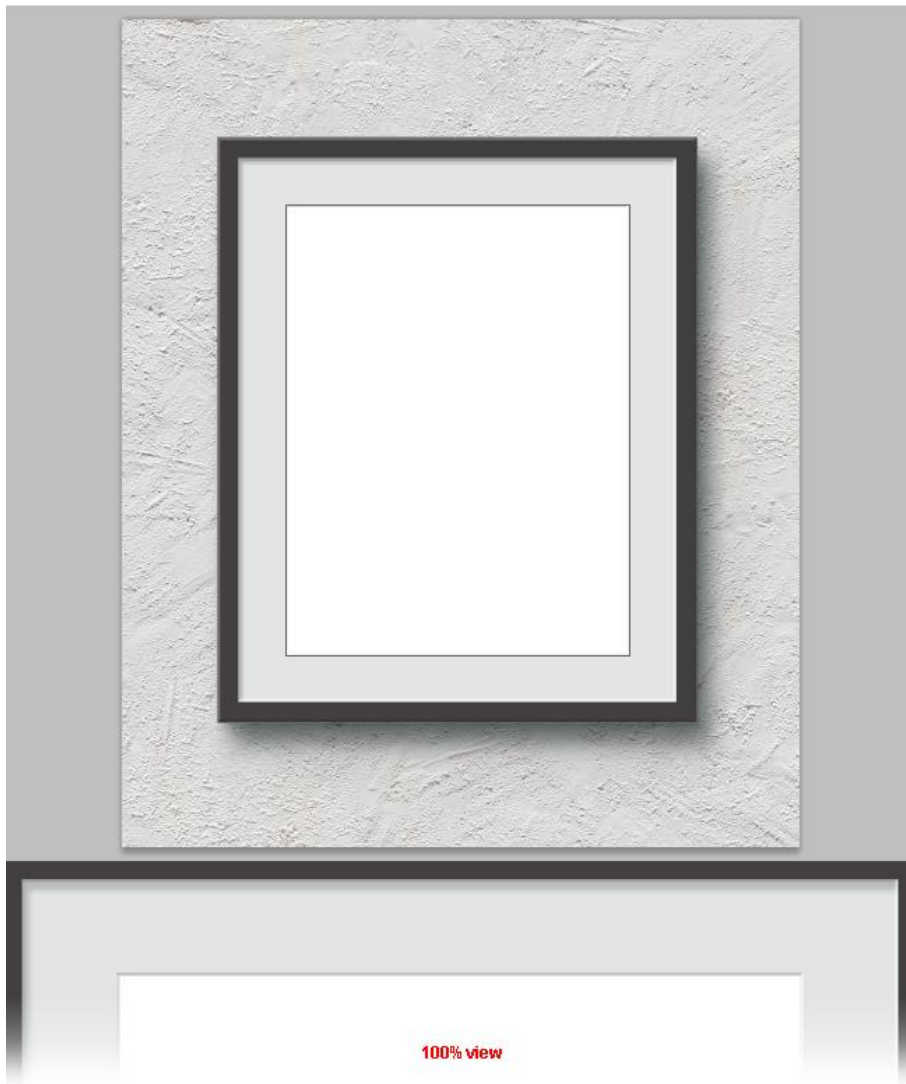


20. Kopieer de laagstijlen van laag "Diepte".

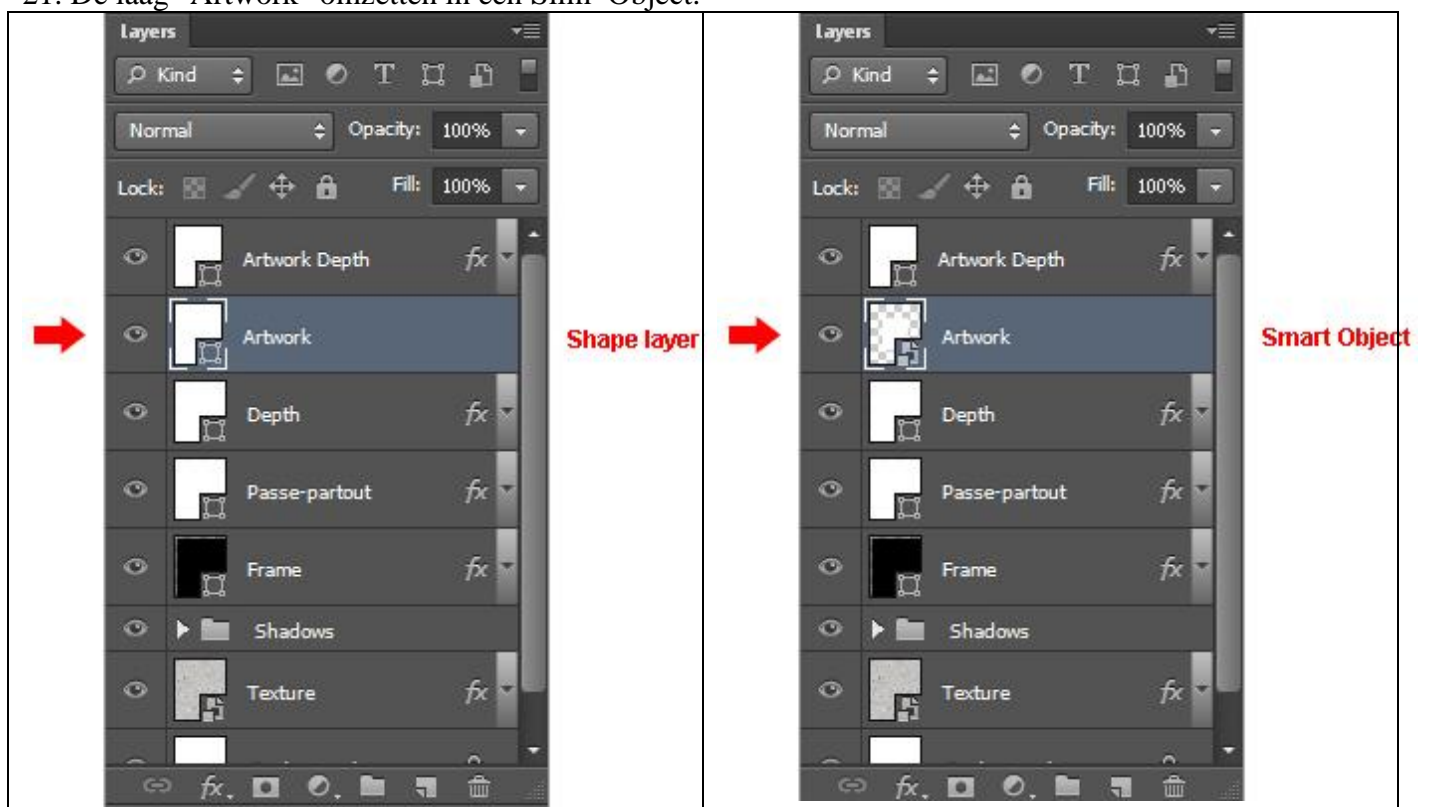


De laagstijlen plakken op laag "Artwork Diepte".

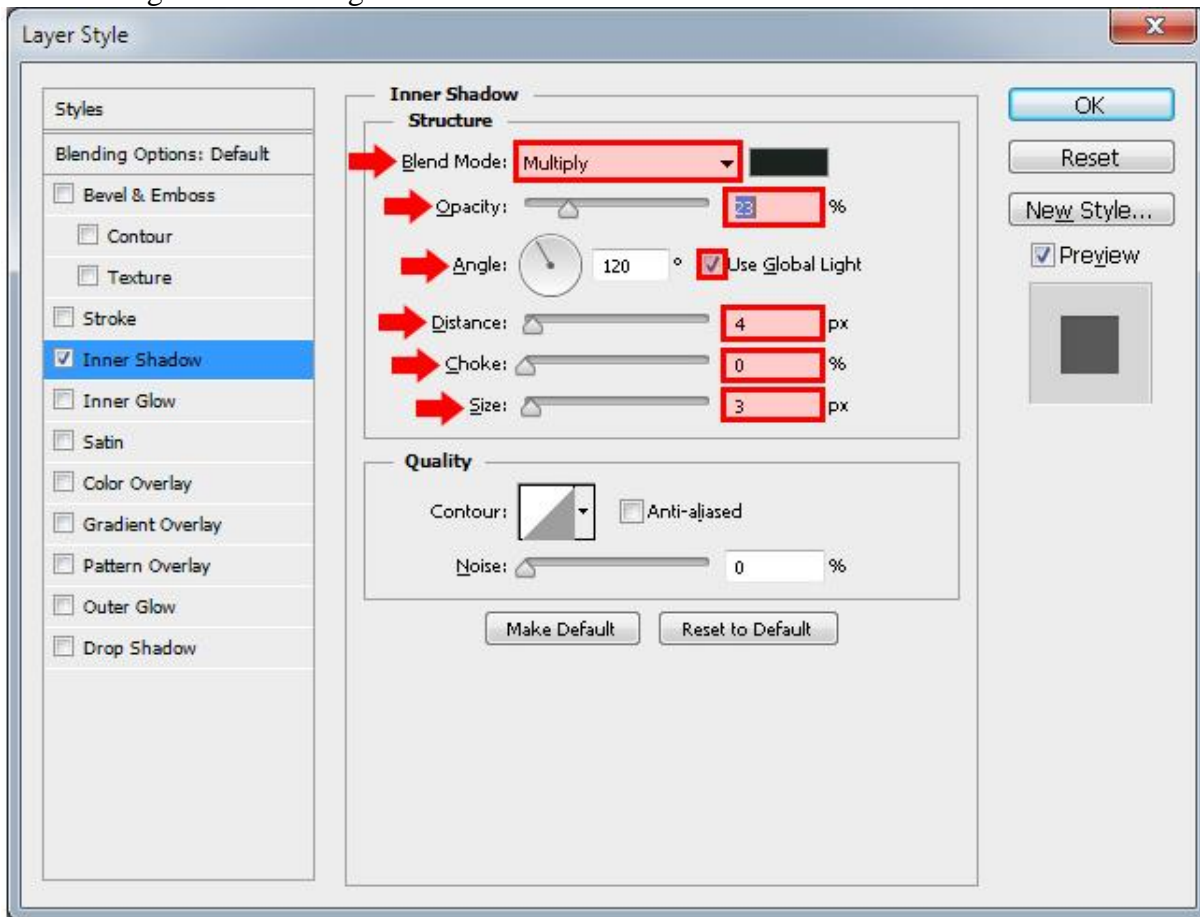




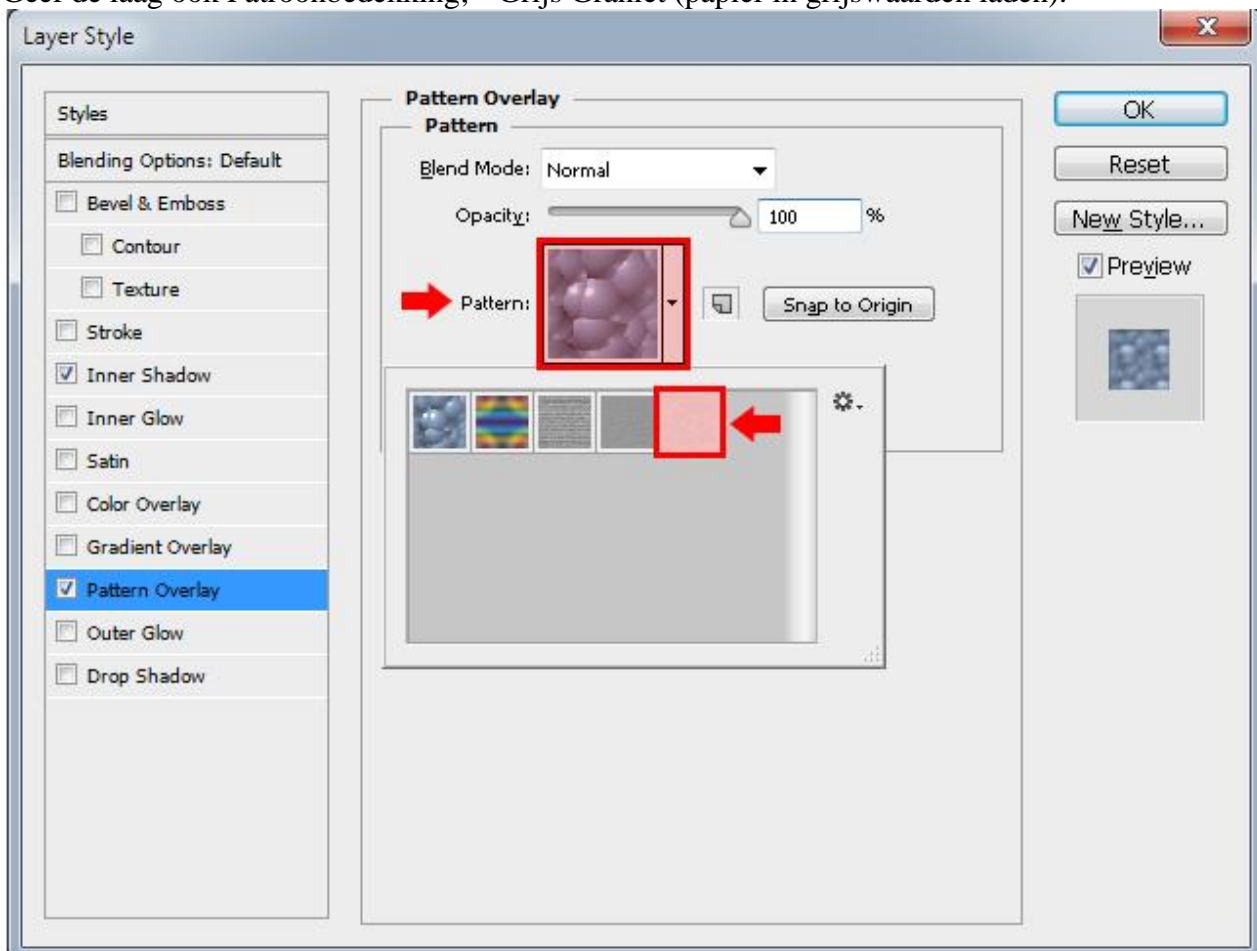
21. De laag "Artwork" omzetten in een Slim Object.

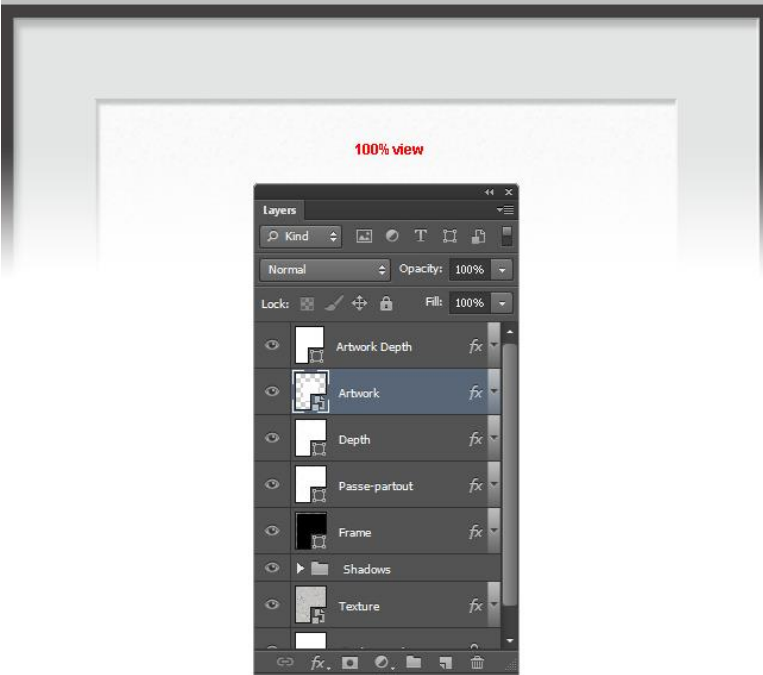
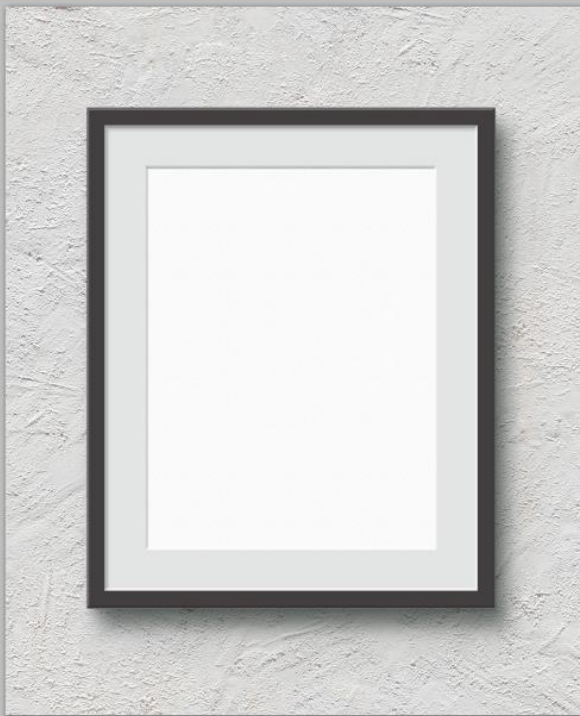
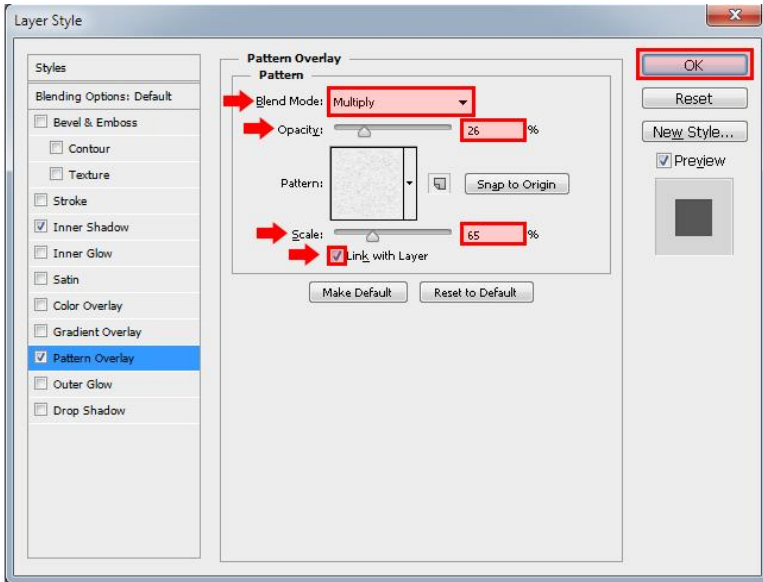


Geef de laag "artwork" volgende Schaduw Binnen

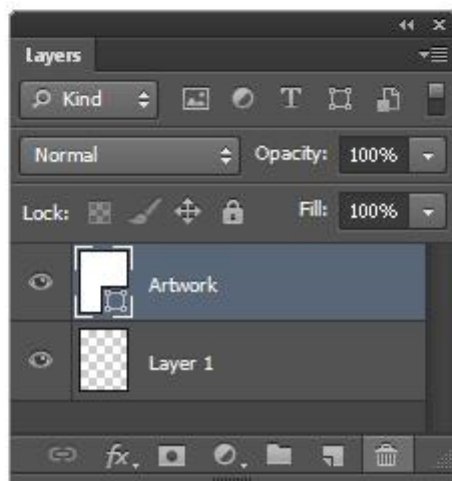
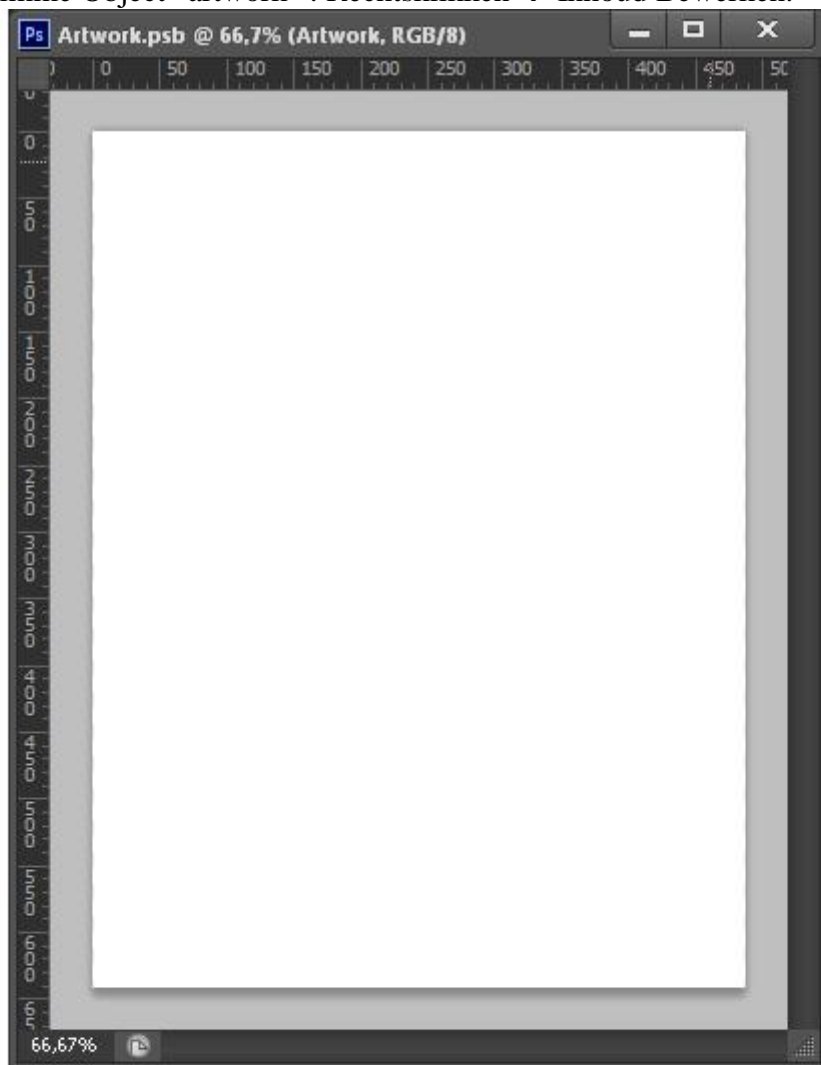


Geef de laag ook Patroonbedekking; "Grijs Graniet (papier in grijswaarden laden).".

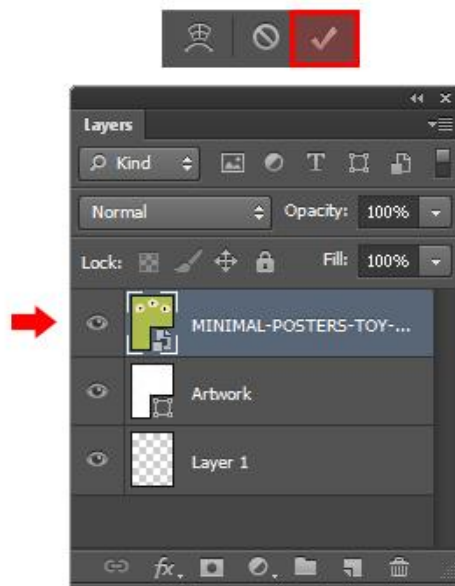




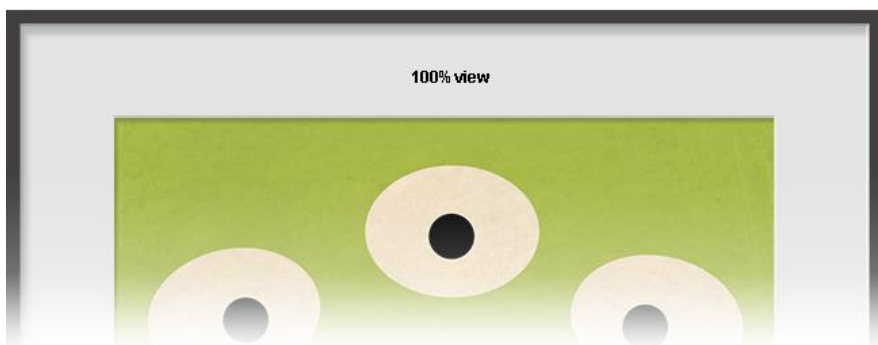
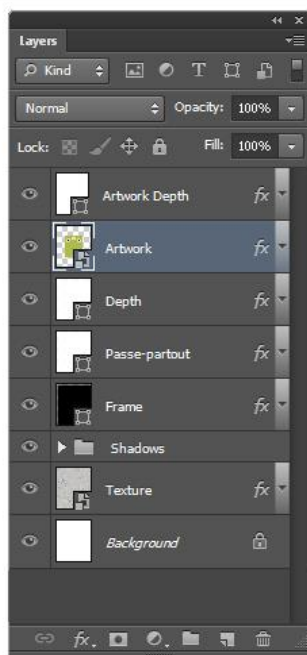
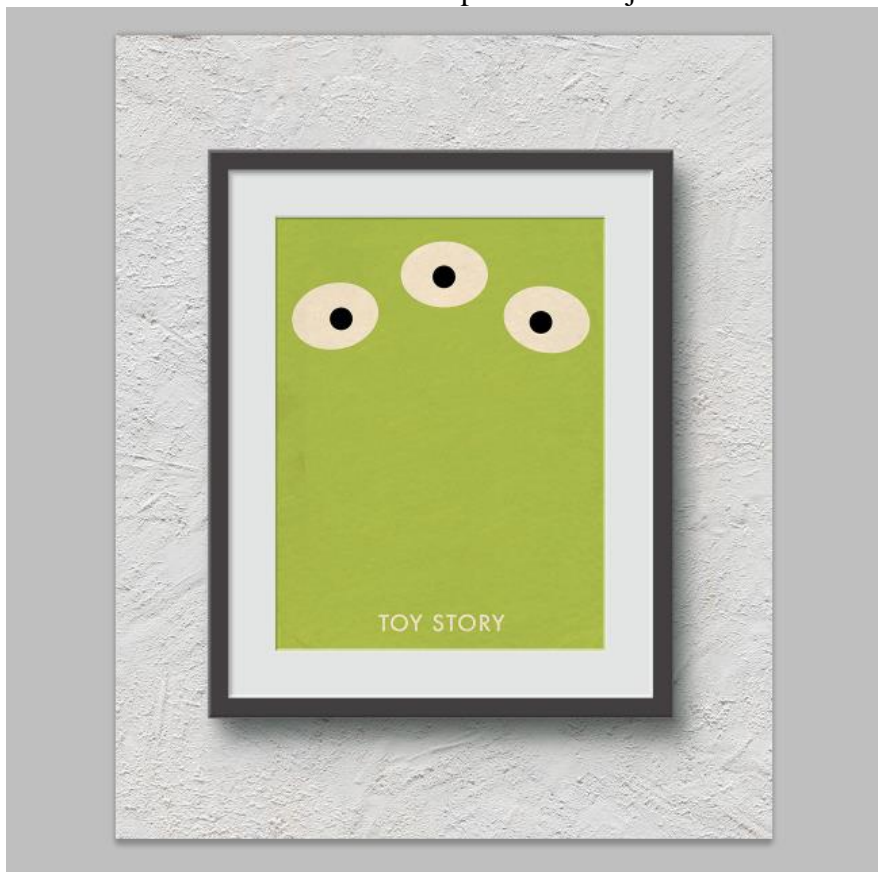
22. Het Slimme Object “artwork” : Rechtsklikken → Inhoud Bewerken.



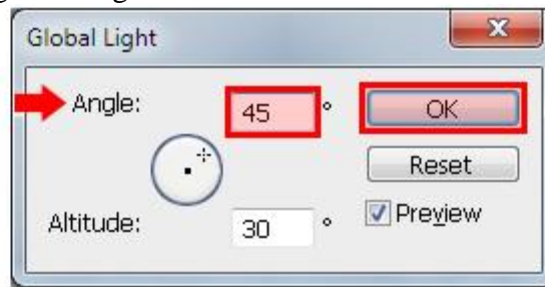
Toevoegen van je eigen foto : Bestand → Plaatsen. Pas de grootte aan.
Het document opslaan en sluiten.



23. Zie bekomen resultaat voor het plaatsen van je foto.



24. Wijzig nog de belichting voor alle laagstijlen: Laag → Laagstijl → Globale belichting. Activeer daarvoor de achtergrond laag!



Indien gewenst kan je via het Slimme Object de afbeelding wijzigen.